



SEEM™ 4

Simply put, Seem 4 is exceptional. This recessed linear 4" profile is at home in grid and drywall, ceilings and walls, independent or in continuous rows. Staggered lamping creates nonstop light, sleek lines create nonstop style.

Simply bold, simply effective, simply Seem.



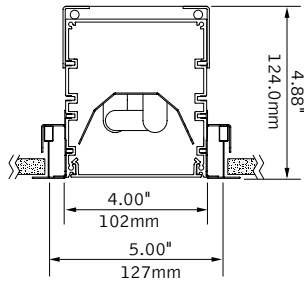
FOCAL POINT®



applications

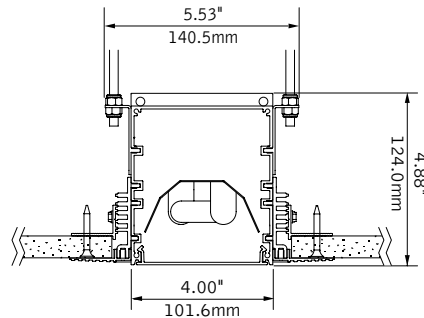
Seem 4 is designed with versatility in mind. **Grid ceiling** applications benefit from a design that falls within standard grid openings, accommodates multiple tee and tile styles, and allows the luminaire to rest at the level of the tile. A **trimless mud-in** finish is suitable for high-end drywall applications in both ceilings and walls. A **flanged** version is also available for ceiling applications where drywall is already installed, provided the mounting means have been prepared in advance. Add a distinctive design element with a corner transition from wall to ceiling. No matter the application, Seem is simply bold.

grid ceiling

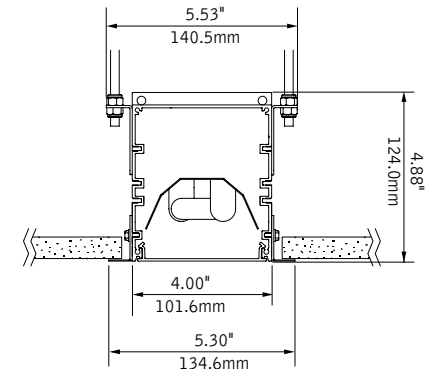


T8 individuals are 5.88" tall in order to accommodate lamp length.

trimless drywall - ceiling/wall



trim flange - hard ceiling



ceiling and wall

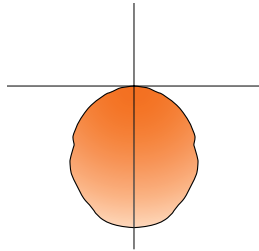
wall mount requires 2"x6" framing

wall to ceiling corner



performance

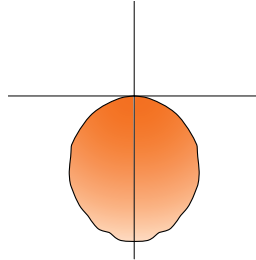
1- Lamp T5



Flush Satin Lens
56% Efficient

High Performance Lens
77% Efficient

2 - Lamp T5



Flush Satin Lens
47% Efficient

High Performance Lens
64% Efficient

High Performance

A High Performance lens is available for ceiling applications where efficiency drives design. Achieving up to 77% efficiency, the 'XP' lens is an excellent choice to balance energy savings with architectural aesthetics.

open area

40'x40' | 10' grid ceiling | 10' row spacing

	flush satin lens				high performance lens			
	continuous		pattern		continuous		pattern	
1T5	29.7	2.2	19.2	1.7	41.8	2.3	27.1	1.8
2T5	50.2	2.1	32.5	1.7	71.2	2.3	46.2	1.8
1T8	24.5	2.2	11.8	1.7	35.0	2.3	18.6	1.9
2T8	43.5	2.1	28.2	1.7	62.1	2.3	34.7	1.8

*measured at 30" workplane.

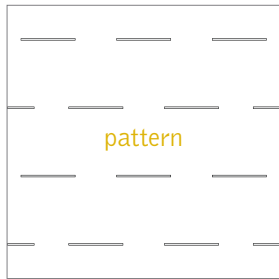
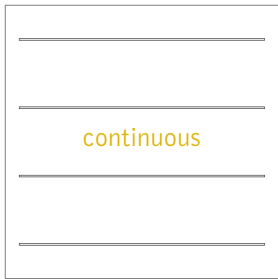
corridor

40'x6' | 8.5' grid ceiling

	flush satin lens				high performance lens			
	continuous		pattern		continuous		pattern	
1T5	24.8	1.7	13.2	1.5	37.0	1.8	19.7	1.5
1T8	20.5	1.7	8.2	1.5	30.9	1.8	13.9	1.6

*measured at floor.

■ average footcandles ■ uniformity (average:minimum)



4' and 8' luminaires



continuous



pattern (4' luminaires)

reflectances: 80/50/20 | Light Loss Factors: T8 - 0.75, T5 - 0.85
Light levels calculated in AGI-32. Calculations do not include any furniture or partitions.



construction

An extruded aluminum housing allows Seem 4 to achieve precision alignment and maximum installation versatility. Formed steel reflectors support 1 and 2 lamp T5, T5HO and T8 staggered lamping and may be easily removed for ballast maintenance. Choose from two extruded acrylic snap-in lens options: Flush Satin for an even appearance and soft glow, 'XP' High Performance for increased efficiency.

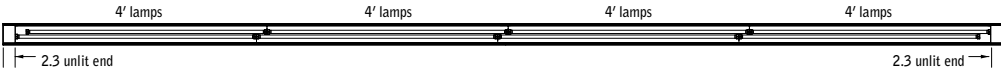
luminaire lengths

Individual Seem 4 units are available in 2', 3', 4' and 5' lengths. Continuous rows may be specified in 1' increments and are supplied with staggered 3' and 4' lamps, providing the maximum illuminated area possible. Seem 4 for grid is designed for simple integration with standard grid lengths, drywall run lengths are nominal. Our run chart, available at focalpointlights.com, describes the end conditions and associated unlit areas for each run length and lamp configuration.

16' examples



1 lamp T5/T5HO

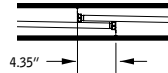


2 lamp T5/T5HO

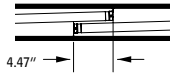
staggered lamping

The overlap distance is specially designed for each of four lamping profiles to minimize socket shadows, and is maintained throughout a run. This method provides the most consistent look possible. Select 1 lamp T5 for the most even appearance.

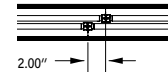
1 lamp T5/T5HO



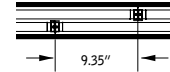
1 lamp T8



2 lamp T5/T5HO



2 lamp T8



beyond standard

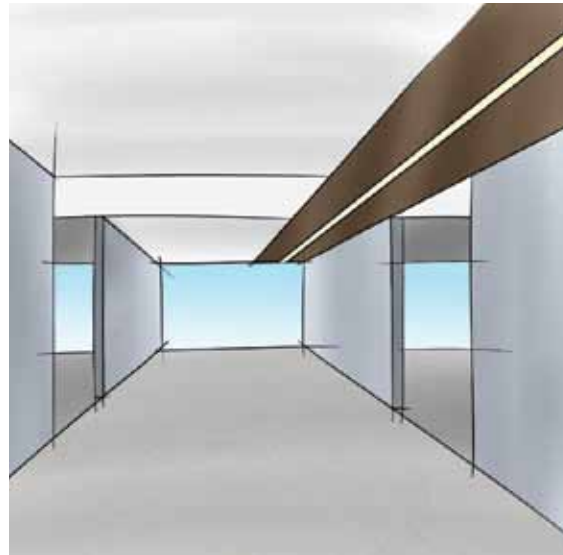
What's your idea?

Focal Point can assist with Seem 4 design solutions you may not find on the specification sheet.

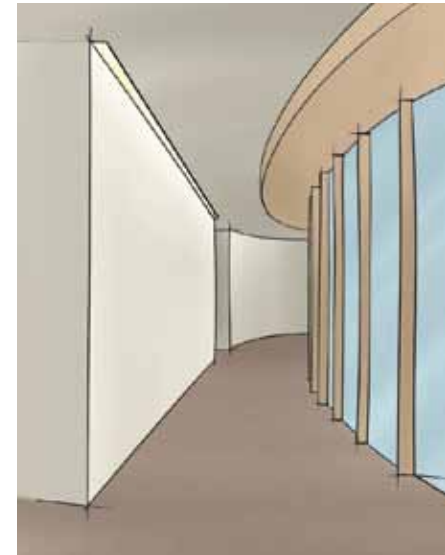
We can work out the details for special applications like these...



multiple ceiling types



wood ceiling

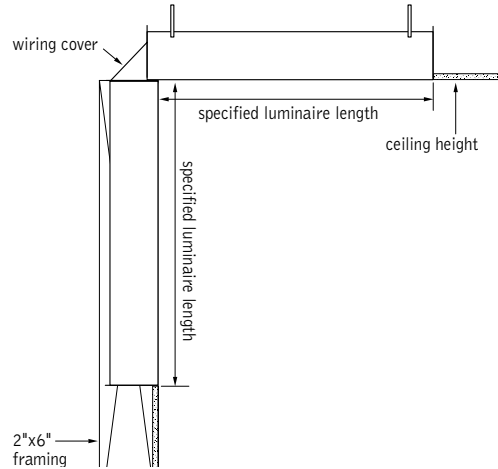


perimeter - against wall

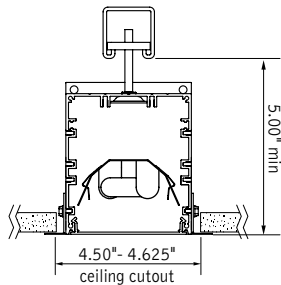
...so get creative, tell us about your space, and let Focal Point help you fulfill your design goals.

mounting details

Wall to Ceiling Corner



Post Drywall Trim Flange



* All trim flange mounting styles for new construction only.

drywall ceiling

luminaire series		<u>FSM4</u>
Seem 4	FSM4	
shielding		
Flush Satin Lens	FL	
High Performance Flush Lens (lamp image may be visible)	FLXP	
lampping		
One Lamp T8	1T8	
Two Lamp T8	2T8	
One Lamp T5	1T5	
Two Lamp T5	2T5	
One Lamp T5HO	1T5HO	
Two Lamp T5HO	2T5HO	
circuits		
Single Circuit	1C	
Dual Circuit (2-lamp luminaires only)	2C	
voltage		
120 Volt	120	
277 Volt	277	
347 Volt	347	
ballast		
Electronic Program Start <10% THD	S	
Electronic Dimming Ballast (not available with 5' lamps)	D	
mounting		
Trim Flange	TF	
Mud-in Trimless Drywall (2.125" max/.375" min. drywall thickness) (consult factory for additional ceiling types)	XF	
factory options		
Chicago Plenum	CP	
Emergency Circuit	EC	
Emergency Battery Pack	EM	
Flex Whip	FW	
HLR/GLR Fuse	FU	
Include 3000K lamp	L830	
Include 3500K lamp	L835	
Include 4100K lamp	L841	
finish		<u>WH</u>
Matte White	WH	
luminaire length (lengths are nominal)		
Specify luminaire length in 1' increments (lengths 6' and longer configured with staggered lamps)	X'	

wall

luminaire series		<u>FSM4</u>
Seem 4	FSM4	
shielding		<u>FL</u>
Flush Satin Lens	FL	
lampping		
One Lamp T8	1T8	
One Lamp T5	1T5	
circuits		<u>1C</u>
Single Circuit	1C	
voltage		
120 Volt	120	
277 Volt	277	
347 Volt	347	
ballast		
Electronic Program Start <10% THD	S	
Electronic Dimming Ballast (not available with 5' lamps)	D	
mounting		
Mud-in Trimless Drywall (2.125" max/.375" min. drywall thickness) (consult factory for additional wall types)	XF	<u>XF</u>
factory options		
Emergency Circuit	EC	
Emergency Battery Pack	EM	
Flex Whip	FW	
HLR/GLR Fuse	FU	
Include 3000K lamp	L830	
Include 3500K lamp	L835	
Include 4100K lamp	L841	
finish		<u>WH</u>
Matte White	WH	
luminaire length (lengths are nominal)		
Specify luminaire length in 1' increments (lengths 6' and longer configured with staggered lamps)	X'	

wall to ceiling corner

luminaire series	<u>FSM4</u>
Seem 4	FSM4
shielding	<u>FL</u>
Flush Satin Lens	FL
lamping	_____
One Lamp T8	1T8
One Lamp T5	1T5
circuits	<u>1C</u>
Single Circuit	1C
voltage	_____
120 Volt	120
277 Volt	277
347 Volt	347
ballast	_____
Electronic Program Start <10% THD	S
Electronic Dimming Ballast (not available with 5' lamps)	D
mounting	<u>CXF</u>
wall to ceiling corner (trimless mud-in only. 2.125" max/.375" min. drywall thickness) (consult factory for additional wall/ceiling types)	CXF
factory options	_____
Chicago Plenum	CP
Emergency Circuit	EC
Emergency Battery Pack	EM
Flex Whip	FW
HLR/GLR Fuse	FU
Include 3000K lamp	L830
Include 3500K lamp	L835
Include 4100K lamp	L841
finish	<u>WH</u>
Matte White	WH
luminaire length* (lengths are nominal)	_____
Specify wall and ceiling lengths in 1' increments (lengths 6' and longer configured with staggered lamps)	X'WX'C
example: 6W12C = 6' in wall, 12' in ceiling	

*supplied as pattern, corner transition parts included.

grid ceiling

luminaire series	<u>FSM4</u>
Seem 4	FSM4
shielding	_____
Flush Satin Lens	FL
High Performance Flush Lens (lamp image may be visible)	FLXP
lamping	_____
One Lamp T8	1T8
Two Lamp T8	2T8
One Lamp T5	1T5
Two Lamp T5	2T5
One Lamp T5H0	1T5H0
Two Lamp T5H0	2T5H0
circuits	_____
Single Circuit	1C
Dual Circuit (2-lamp luminaires only)	2C
voltage	_____
120 Volt	120
277 Volt	277
347 Volt	347
ballast	_____
Electronic Program Start <10% THD	S
Electronic Dimming Ballast (not available with 5' lamps)	D
ceiling configurations	_____
Std. 15/16" Lay-in	G1
Std. 15/16" Tegular	T1
Std. 9/16" Lay-in	G2
Std. 9/16" Tegular	T2
9/16" Slot-tee Tegular	G3
Tall 15/16" Lay-in	G4
Tall 15/16" Tegular (not available in T8 individuals)	T4
Tall 9/16" Lay-in	G5
Tall 9/16" Tegular (not available in T8 individuals)	T5
Node 9/16" Tegular	T6

factory options	_____
Chicago Plenum	CP
Emergency Circuit	EC
Emergency Battery Pack	EM
Flex Whip	FW
HLR/GLR Fuse	FU
Include 3000K lamp	L830
Include 3500K lamp	L835
Include 4100K lamp	L841
finish	<u>WH</u>
Matte White	WH
luminaire length (designed to fit standard grid lengths)	_____
Specify luminaire length in 1' increments (lengths 6' and longer configured with staggered lamps. 6' & 8' 2T8 configured with non-staggered lamps.)	X'



T H E
A R T O F
L I G H T®

©2010 Focal Point LLC, 4141 S. Pulaski Road, Chicago, Illinois 60632, www.focalpointlights.com, T 773.247.9494, F 773.247.8484.

All rights reserved. "Focal Point", "The Art of Light", Seem and the Light-Ray Graphic are trademarks or registered trademarks of Focal Point, LLC. Products shown in this brochure may be covered by U.S. patents and patents pending.

Visit focalpointlights.com for specification and other details on our entire Focal Point catalog.



#MKT1090