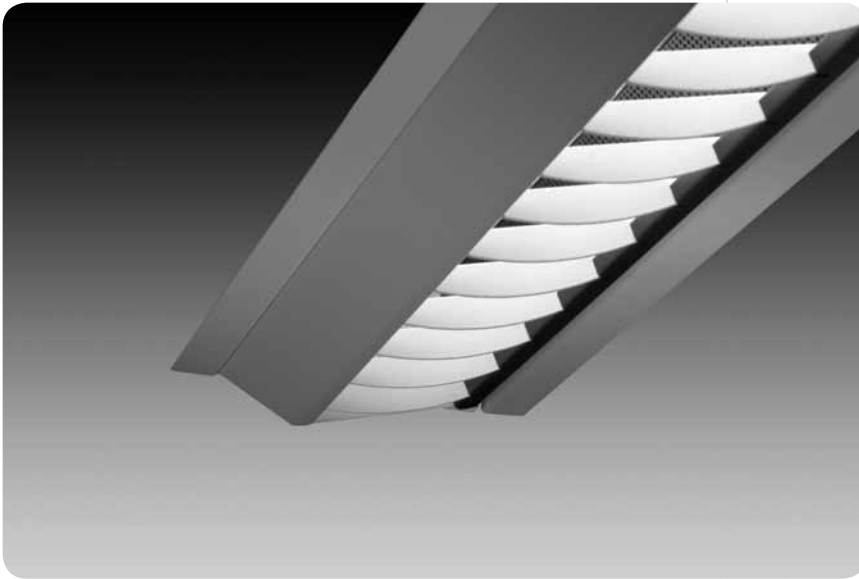


louver
avenue® a



features

Narrow aperture high performance T5/T5HO asymmetric wall wash with louver or lens shielding options.

Precision micro-optic delivers shadow free illumination from the ceiling to the floor.

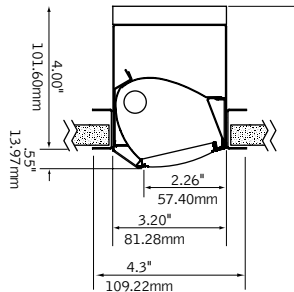
Features 2" narrow aperture for clean unobtrusive aesthetic.

Drywall installation is available, which allows for both individual or row mount capability.

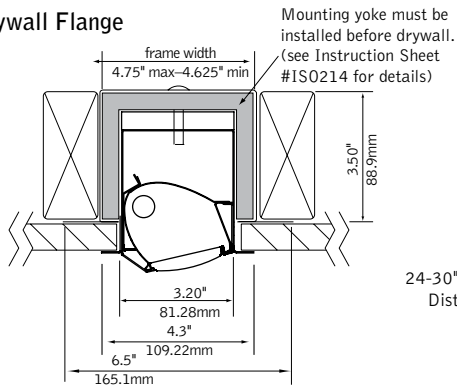
Great solution for conference rooms, highlighting artwork, corridors, white board or any application that requires high levels of vertical illumination.

dimensional data

Grid Mount (Louver Shown)



Drywall Flange



24-30" Recommended Distance from Wall



companion luminaire



mr16

linear

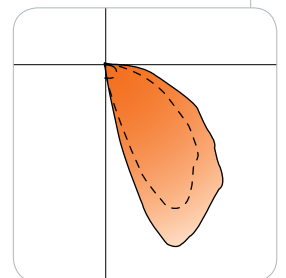
recessed wall mount

performance

1-Lamp T5HO
41% Efficiency
1581 cd @ 25°



Use in place of multiple halogen or compact fluorescent wall washers.



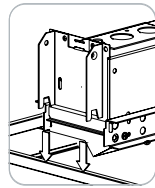
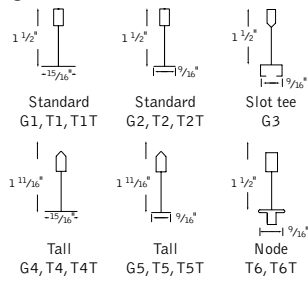
Visit focalpointlights.com for complete photometric data.

fixture:

project:

mounting information

grid



lay-in tile

tegular tile

drywall

2' unit (cutout dimension: 3.5" x 23.6")
3' unit (cutout dimension: 3.5" x 35.6")

4' unit (cutout dimension: 3.5" x 47.6")
Drywall flange version provided with mounting yoke.

specifications

construction

One-piece 20 Ga. steel housing.
Grid luminaires include 20 Ga. steel, .5" wide flange rail finished in matte satin white.
Drywall flange option is provided with 20 Ga. steel, .5" wide flange kit and 20 Ga. galvanized steel mounting yoke.

- 2' unit weight: 5 lbs.
- 3' unit weight: 6 lbs.
- 4' unit weight: 7 lbs.

optic

.020" specular aluminum upper reflector and .020" semi-specular lower reflector.
24 Ga. perforated matte black diffuser with 24% opening.
24 Ga. Steel radial cut off louver is .375" H x 1" frequency.
RL options are not interchangeable in the field.

electrical

Luminaires are individually wired for specified circuits.
Thru-wiring not available.
Electronic ballasts are thermally protected and have a Class "P" rating.
Optional dimming ballasts available.
Consult factory for dimming specifications and availability.
UL and cUL listed.

finish

Polyester powder coat applied over a 5-stage pre-treatment.
Perforated diffuser always finished in Matte Black.
Radial cut-off louver always painted Matte Satin White.

ordering

luminaire series FAVA
Avenue A FAVA

shielding RL
Radial Cut-Off Louver RL
(Louver always painted white)
(Note: RL options are not interchangeable in the field)

lampping _____
One Lamp T5 1T5
One Lamp T5HO 1T5HO

circuits 1C
Single Circuit 1C

voltage _____
120 Volt 120
277 Volt 277
347 Volt 347

ballast _____
Electronic Program Start <10% THD S
Electronic Dimming Ballast* D

ceiling configurations* _____
Drywall Flange F

	Std. 15/16" Lay-in	G1
	Std. 15/16" Tegular	T1
	Std. 15/16" Tegular, against Tee	T1T
	Std. 9/16" Lay-in	G2
	Std. 9/16" Tegular	T2
	Std. 9/16" Tegular, against Tee	T2T
	9/16" Slot-tee Tegular	G3
	Tall 15/16" Lay-in	G4
	Tall 15/16" Tegular	T4
	Tall 15/16" Tegular, against Tee	T4T
	Tall 9/16" Lay-in	G5
	Tall 9/16" Tegular	T5
	Tall 9/16" Tegular, against Tee	T5T
	Node 9/16" Tegular	T6
	Node 9/16" Tegular, against Tee	T6T

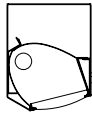
factory options _____
Chicago Plenum CP
Emergency Battery Pack* EM
(3' & 4' Luminaires Only)
Earthquake Clips EQ
Flex Whip* FW
HLR/GLR Fuse FU
Include 3000K Lamp* L830
Include 3500K Lamp* L835
Include 4100K Lamp* L841
Lutron™ Sensor Feed* SF
(EcoSystem ballast required)

finish _____
Matte White Housing WH
Matte Black Housing BK
Titanium Silver TS
(Perforated diffuser always Matte Black)
(Radial cut-off louver painted Matte Satin White as standard)

luminaire length _____
2' Nominal Housing 2'
3' Nominal Housing 3'
4' Nominal Housing 4'
5' Nominal Housing 5'

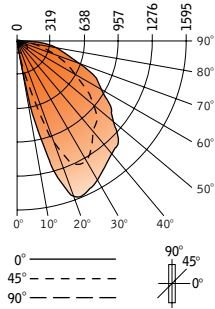
* for more information see Reference section.

louver
avenue® a



Filename: FAVARL1T5H.IES
 Catalog #: FAVA-RL-1T5HO-1C-120-S-G1-WH-4'
 Efficiency: 41%
 Test #: 12597.0

CANDLEPOWER DISTRIBUTION



Vertical Angle	Horizontal Angle				Zonal Lumens
	0°	22.5°	45°	67.5°	
0°	120	120	120	120	120
5°	175	161	137	129	120
15°	1212	1043	556	187	121
25°	1581	1520	1301	404	137
35°	1457	1370	1228	774	144
45°	1354	1255	1070	835	131
55°	1077	952	783	582	118
65°	787	662	509	342	107
75°	441	360	244	119	66
85°	171	124	65	39	17
90°	67	51	13	0	0
95°	0	0	0	0	0
105°	0	0	0	0	0
115°	0	0	0	0	0
125°	0	0	0	0	0
135°	0	0	0	0	0
145°	0	0	0	0	0
155°	0	0	0	0	0
165°	0	0	0	0	0
175°	0	0	0	0	0
180°	0	0	0	0	0

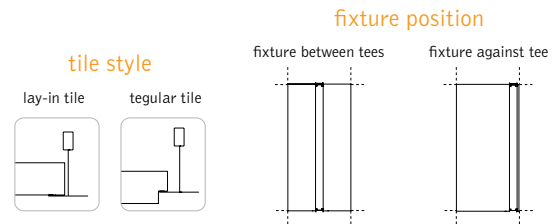
LUMEN SUMMARY

Zone	Lumens	% Lamp	% Fixt
0°-30°	365	7.3	17.9
0°-40°	737	14.7	36.3
0°-60°	1564	31.3	76.9
0°-90°	2018	40.4	99.3
Total Luminaire	2032	40.6	100.0

Go to www.focalpointlights.com for additional photometric data.

avenue a grid ceiling configurations

Avenue A is configured at our factory to integrate easily with your specified grid type, tile style and fixture position. Please review the below options and choose the mounting code that matches your application.



1 1/2"

15/16"

Standard 15/16"

G1

lay-in tile,
any fixture placement

T1

tegular tile,
fixture between tees

T1T

tegular tile,
fixture against tee

1 1/2"

9/16"

Standard 9/16"

G2

lay-in tile,
any fixture placement

T2

tegular tile,
fixture between tees

T2T

tegular tile,
fixture against tee

1 3/4" 1 1/2"

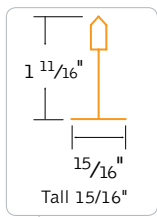
9/16"

Slot Tee 9/16"

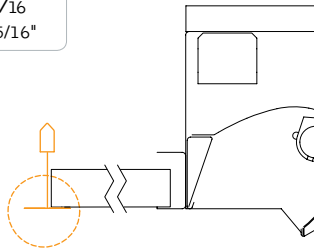
G3

slot-tee tegular tile,
any fixture placement

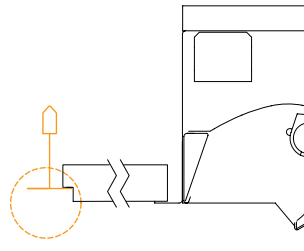
www.focalpointlights.com | 1.773.247.9494



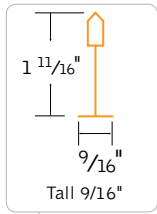
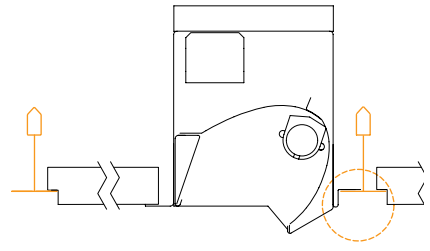
G4
lay-in tile,
any fixture placement



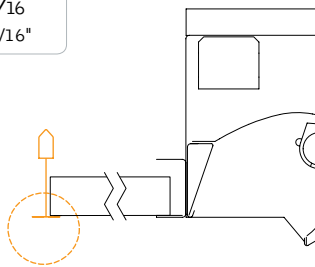
T4
tegular tile,
fixture between tees



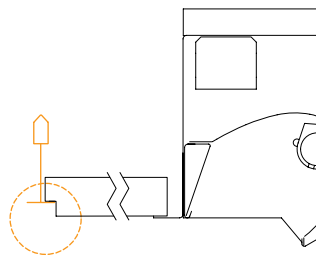
T4T
tegular tile,
fixture against tee



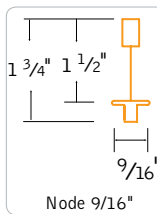
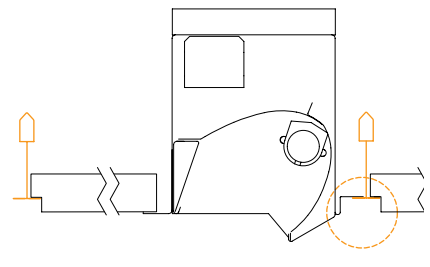
G5
lay-in tile,
any fixture placement



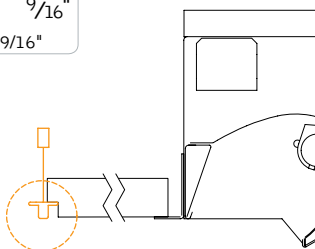
T5
tegular tile,
fixture between tees



T5T
tegular tile,
fixture against tee



T6
tegular tile,
fixture between tees



T6T
tegular tile,
fixture against tee

