

Armstrong® TechZone®
avenue® b



features

Narrow 3" slot, T5/T5H0 fluorescent with 2-MR16 halogen lamps designed for 4" Armstrong® TechZone®.

Shielding options include corrugated, solid regressed trim and flush lens.

Avenue® B with MR16 is a great solution for general illumination that also requires the benefits of accent lighting in a narrow aperture.

shielding options



corrugated regressed trim

solid regressed trim

flush lens

mr16 options



flush mount mr16 (25° adjustment)

extended yoke mr16 (90° adjustment)



snoot

hex louver

linear

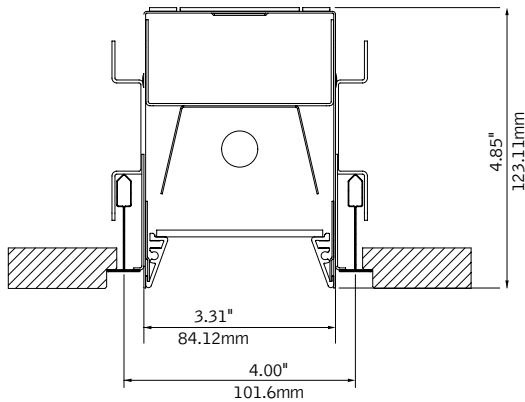
prismatic

sand blasted

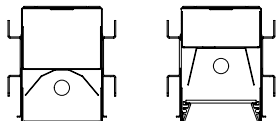
soft focus

dimensional data

Regress Trim



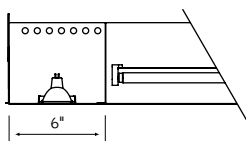
Shielding options



Flush Lens

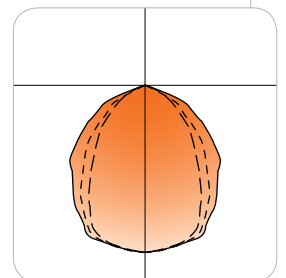
Regress Trim

mr16



performance

Regressed with lens
1-Lamp T5
62% Efficiency
1466 cd @ 0°



Visit focalpointlights.com for complete photometric data.

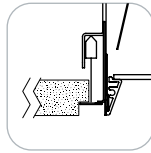
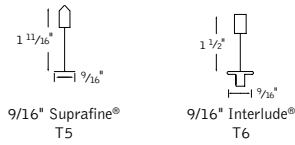
october 2011 B

fixture:

project:

mounting information

grid



Luminaire always rests at level of tile.

specifications

construction

One-piece 20 Ga. steel housing.
 20 Ga., steel MR16 housing and faceplate.
 Two-piece, 20 Ga. spun steel MR16 assembly available in flush mount or with extended yoke. Extended yoke does not retract.
 Corrugated and solid regress trim constructed of 6063-T5 extruded aluminum finished in Matte Satin White.
 20 Ga. steel, .5" wide flange rail finished in matte satin white.

4' unit weight: 7 lbs.
 5' unit weight: 10 lbs.

optic

22 Ga. steel reflectors finished in High Reflectance White powder coat.
 Frosted Acrylic lens diffuser .118" thick.
 Clear Acrylic MicroGlow™ diffuser .125" thick with miniature prismatic pattern.
 MR16 lens: .125" thick tempered clear glass supplied.

electrical

Luminaires are individually wired for specified circuits.
 Thru-wiring not available.
 Electronic ballasts are thermally protected and have a Class "P" rating.
 Electronic 12V, MR16 dimming transformer, 50w max.
 Optional dimming ballasts available.
 Consult factory for dimming specifications and availability.
 Thermal protector included.
 UL listed for non-insulated ceiling applications only.

finish

Polyester powder coat applied over a 5-stage pre-treatment.
 MR16 gimbal finished to match housing.

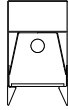
ordering

luminaire series	FAVBTZ
Avenue B for Armstrong® TechZone®	FAVBTZ
shielding	_____
Corrugated Regressed Trim Frst.Lns	CR
Solid Regressed Trim Frosted Lens	SR
Flush Frosted Lens	FL
Corrugated Regressed Trim with MicroGlow™ Lens	CRM
Solid Regressed Trim with MicroGlow™ Lens	SRM
Flush MicroGlow™ Lens	FLM
lamping	_____
(MR16 lamps provided by others)	
One Lamp T5	1T5
One Lamp T5HO	1T5HO
circuits	2C
Dual Circuit (fluor. switched separately from incand.)	2C
voltage	_____
120 Volt	120
277 Volt	277
ballast	_____
Electronic Program Start <10% THD	S
Electronic Dimming Ballast*	D
ceiling configurations	_____
9/16" Suprafine Tegular	T5
9/16" Interlude Node Tegular	T6
factory options	_____
Chicago Plenum	CP
Emergency Battery Pack*	EM
Earthquake Clips	EQ
Flex Whip*	FW
HLR/GLR Fuse	FU
Include 3000K Lamp*	L830
Include 3500K Lamp*	L835
Include 4100K Lamp*	L841
Wattage Restriction Label (xx= wattage)	WRXX
Lutron™ Sensor Feed* (EcoSystem ballast required)	SF
mr16 (50W max.) lamp qty. & gimbal type	_____
(Clear lens supplied)	
Flush Mount	2FM
Extended Yoke Gimbal	2EG
mr16 options	_____
Snoot	SN
Hex louver	HL
Linear Spread Lens	LSL
Prismatic Spread Lens	PSL
Sand Blasted Lens	SBL
Soft Focus Lens	SFL
finish	_____
Matte White Housing	WH
luminaire length	_____
4' Nominal Housing (3' fluor. lamp)	4'
5' Nominal Housing (4' fluor. lamp)	5'

* for more information see Reference section.

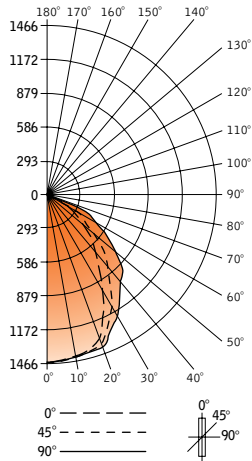


regress with lens avenue® b



Filename: FAVBSR1T5H0.IES
 Catalog #: FAVB-SR-1T5H0-1C-120-S-G1-WH-4'
 Efficiency: 62%
 Test #: 12914.0

CANDLEPOWER DISTRIBUTION



Spacing 1.2
 Criterion: 1.1

Vertical Angle	Horizontal Angle				Zonal Lumens
	0°	22.5°	45°	67.5°	
0°	1466	1466	1466	1466	1466
5°	1457	1457	1456	1456	139
15°	1432	1428	1417	1399	401
25°	1311	1299	1254	1187	575
35°	1102	1073	958	837	599
45°	934	866	701	586	565
55°	649	578	426	357	416
65°	404	328	232	187	257
75°	184	133	77	60	103
85°	39	21	19	18	24
90°	0	0	0	0	0
95°	0	0	0	0	0
105°	0	0	0	0	0
115°	0	0	0	0	0
125°	0	0	0	0	0
135°	0	0	0	0	0
145°	0	0	0	0	0
155°	0	0	0	0	0
165°	0	0	0	0	0
175°	0	0	0	0	0
180°	0	0	0	0	0

LUMEN SUMMARY

Zone	Lumens	% Lamp	% Fixt
0°-30°	1115	22.3	36.2
0°-40°	1714	34.3	55.7
0°-60°	2695	53.9	87.5
0°-90°	3078	61.6	100.0
Total Luminaire	3078	62	100.0

LUMINANCE DATA (CD/M²)

Vertical Angle	0°	45°	90°
45°	16467	12359	9750
55°	14106	9259	7281
65°	11918	6844	5133
75°	8863	3709	2794
85°	5579	2718	2432

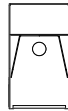
CO-EFFICIENTS OF UTILIZATION

Floor	80			70			20							
Ceiling	70	50	30	10	70	50	30	10	50	30	10	00		
Wall	73	73	73	73	72	72	72	68	68	65	65	63	63	62
RCR 0	73	73	73	73	72	72	72	68	68	65	65	63	63	62
1	68	66	64	62	67	65	61	62	59	60	57	58	56	54
2	63	59	56	53	62	58	52	56	51	54	50	52	49	48
3	59	53	49	46	57	52	45	51	45	49	44	48	43	42
4	54	48	43	40	59	47	40	46	39	45	39	43	38	37
5	50	43	38	35	49	42	34	41	34	40	34	39	33	32
6	46	39	34	31	45	39	30	37	30	36	30	36	30	29
7	43	35	31	27	42	35	27	34	27	33	27	32	26	25
8	40	32	27	24	39	32	24	31	24	30	23	29	23	22
9	37	29	24	21	36	29	21	28	21	27	21	27	20	19
10	34	26	22	19	33	26	19	25	18	25	18	24	18	17

Go to www.focalpointlights.com for additional photometric data.

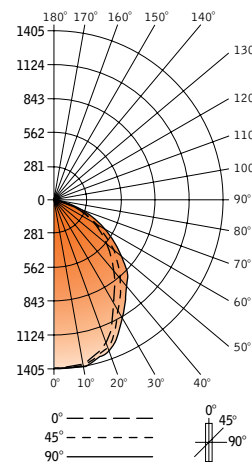
Numbers indicate percentage values of reflectivity.

flush lens avenue® b



Filename: FAVBFL1T5.IES
 Catalog #: FAVB-FL-1T5H0-1C-120-S-G1-WH-4'
 Efficiency: 65%
 Test #: 13734.0

CANDLEPOWER DISTRIBUTION



Spacing 1.2
 Criterion: 1.0

Vertical Angle	Horizontal Angle				Zonal Lumens	
	0°	22.5°	45°	67.5°		
0°	1397	1397	1397	197	1397	
5°	1395	1395	1394	1391	1392	133
15°	1361	1357	1342	1329	1324	381
25°	1242	1228	1192	1159	1145	552
35°	1029	1005	950	903	885	599
45°	8446	812	747	700	684	586
55°	580	550	501	471	464	458
65°	356	338	310	297	293	315
75°	165	158	150	144	142	160
85°	35	37	38	38	40	41
90°	0	0	0	0	0	0
95°	0	0	0	0	0	0
105°	0	0	0	0	0	0
115°	0	0	0	0	0	0
125°	0	0	0	0	0	0
135°	0	0	0	0	0	0
145°	0	0	0	0	0	0
155°	0	0	0	0	0	0
165°	0	0	0	0	0	0
175°	0	0	0	0	0	0
180°	0	0	0	0	0	0

LUMEN SUMMARY

Zone	Lumens	% Lamp	% Fixt
0°-30°	1066	21.3	33.0
0°-40°	1665	33.3	51.6
0°-60°	2709	54.2	84.0
0°-90°	3225	64.5	100.0
Total Luminaire	3225	64.5	100.0

LUMINANCE DATA (CD/M²)

Vertical Angle	0°	45°	90°
45°	19577	17286	15828
55°	16546	14293	13237
65°	13784	12003	11344
75°	10432	9483	8977
85°	6571	7134	7510

CO-EFFICIENTS OF UTILIZATION

Floor	80			70			20							
Ceiling	70	50	30	10	70	50	30	10	50	30	10	00		
Wall	77	77	77	77	75	75	75	72	72	69	69	66	66	65
RCR 0	77	77	77	77	75	75	75	72	72	69	69	66	66	65
1	71	69	66	64	70	67	63	64	61	62	59	60	57	56
2	66	61	57	54	64	60	53	58	52	56	51	54	50	49
3	61	55	50	46	59	54	46	52	45	50	44	49	44	42
4	56	49	44	40	55	48	40	47	39	45	39	44	38	37
5	51	44	38	34	50	43	34	42	34	41	34	39	33	32
6	48	40	34	30	46	39	30	38	30	37	30	36	29	28
7	44	36	30	27	43	35	27	34	26	33	26	32	26	25
8	43	32	27	23	40	32	23	31	23	30	23	29	23	22
9	37	29	24	20	37	29	20	28	20	27	20	26	20	19
10	35	26	21	18	34	26	18	25	18	25	18	24	18	17

Go to www.focalpointlights.com for additional photometric data.

Numbers indicate percentage values of reflectivity.