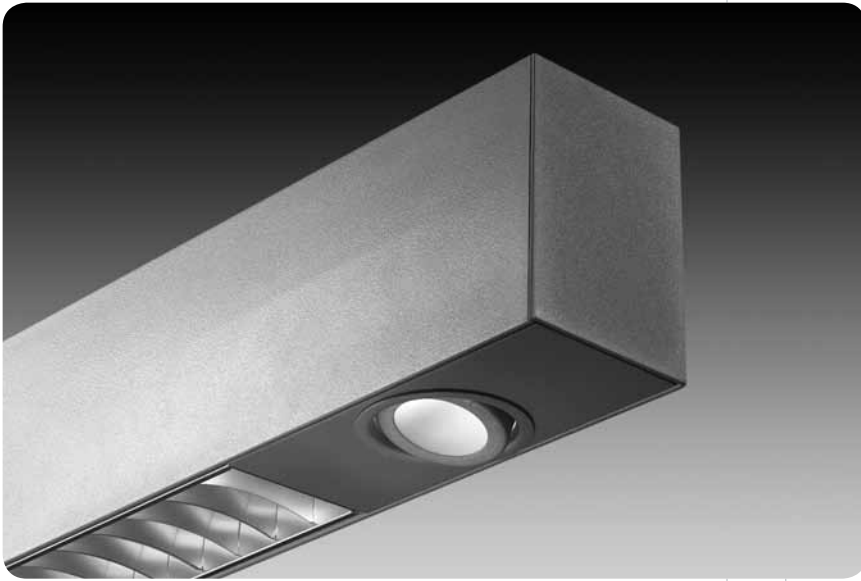


mr16  
avenue® d



features

Extruded aluminum, suspended direct/indirect or direct linear T5/T5HO fluorescent luminaire.

3" aperture rectilinear profile creates sleek aesthetic.

Avenue® D makes an exceptional aesthetic statement in conference rooms, private offices, reception areas or other high-end applications.

shielding options



concave parabolic louver

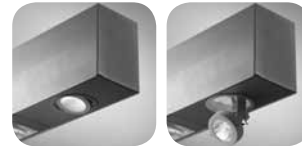
solid regress

flush satin lens



corrugated regress

mr16 options



flush mount mr16 (25° adjustment)

extended yoke mr16 (90° adjustment)



snoot

hex louver

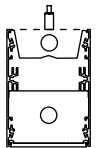
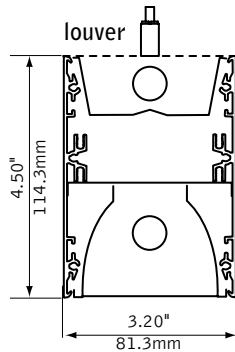
linear

prismatic

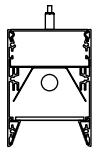
sand blasted

soft focus

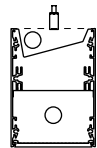
dimensional data



flush lens



regress (direct only)

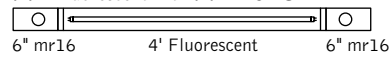


asymmetric (indirect only)

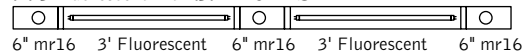
example

mr16 location must be specified each mr16 module adds 6" to overall length of luminaire (see reference section for detailed information)

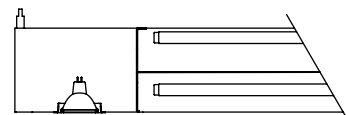
(1) 4' fluorescent with (2) mr16 = 5'



(2) 3' fluorescent with (3) mr16 = 7.5'

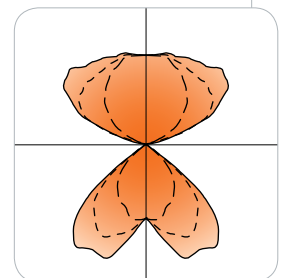


standard mr16 modules can be configured with 3' & 4' fluorescent lamps



performance

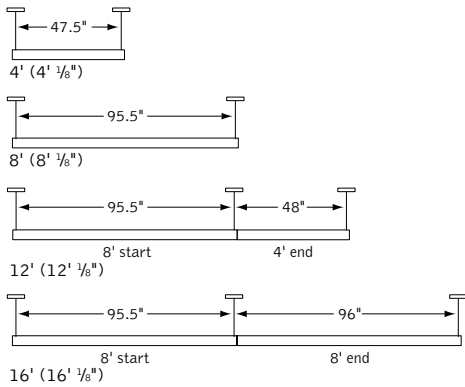
Concave Parabolic Louver  
1-Lamp T5HO  
71% Efficiency  
1537 cd @ 35°



Visit [focalpointlights.com](http://focalpointlights.com) for complete photometric data.

fixture:  
project:

### suspension information



Consult factory for additional row length information.  
Consult factory for luminaire lengths and suspension points when mixing MR16 with fluorescent.

### specifications

#### construction

Two-piece, .050" thick housing of 6063-T5 extruded aluminum.  
Corrugated regress trim constructed of 6063-T5 extruded aluminum painted to match fixture.  
Solid regress trim manufactured with 20 Ga. C.R.S. painted to match fixture.  
20 Ga. ballast channel. 16 Ga. internal bulkhead. 14 Ga. steel end caps.  
Extruded aluminum MR16 housing and gimbal faceplate.  
Two-piece, 20 Ga. spun steel MR16 assembly available in flush mount or with extended yoke.  
All luminaires are provided with single point aircraft cable suspension mounted on 48" and 96" centers.

4' unit weight: 18 lbs  
8' unit weight: 32 lbs

#### optic

Reflectors fabricated of 22 Ga. Steel finished in High Reflectance White powder coat.  
Regress satin lens: 125" thick opal white with satin finish.  
Flush satin lens: extruded DR™ acrylic lens .156" thick with opal satin finish.  
Concave parabolic louver: 1"H x 1" frequency fabricated of low iridescent, semi-specular premium grade aluminum.  
MR16 lens: .125" thick tempered glass supplied.

#### electrical

Luminaires are pre-wired with factory installed branch circuit wiring and over-molded quick connects.  
Electronic fluorescent ballasts are thermally protected and have a Class "P" rating.  
Electronic 12V, MR16 dimming transformer, 50w max.  
Optional dimming ballasts available.  
UL and cUL listed.

#### finish

Polyester powder coat applied over a 5-stage pre-treatment.  
MR16 gimbal finished to match housing.

### ordering

luminaire series	FAVDS	FAVDS
Avenue D	FAVDS	_____
<b>shielding</b>		
Corrugated Regressed Trim/Satin Lens (Direct only)	CR	_____
Solid Regressed Trim/Satin Lens (Direct only)	SR	_____
Flush Satin Lens	FL	_____
Concave Parabolic Louver	PL	_____
White Concave Parabolic Louver	PW	_____
<b>lampping</b>		
One Lamp T5	1T5	_____
One Lamp T5HO (Direct only)	1T5HO	_____
One Lamp Up/One Lamp Down T5	11T5	_____
One Lamp Up/One Lamp Down T5HO	11T5HO	_____
One Lamp Asymmetric Up/One Lamp Down T5	1A1T5	_____
One Lamp Asymmetric Up/One Lamp Down T5HO	1A1T5HO	_____
<b>circuits</b>		
Single Circuit	1C	_____
Dual Circuit	2C	_____
Three Circuit	3C	_____
<b>voltage</b>		
120 Volt	120	_____
277 Volt	277	_____
<b>ballast</b>		
Electronic Program Start <10% THD	S	_____
Electronic Dimming Ballast*	D	_____
<b>mounting</b>		
24" Cable Suspension	C24	_____
48" Cable Suspension	C48	_____
96" Cable Suspension	C96	_____
(Specify one of the following in place of "C" for J - 2" canopies at non-feed locations. CS - for sloped ceilings.)		
<b>factory options</b>		
Opal Acrylic Dust Cover	DC	_____
Emergency Circuit*	EC	_____
Emergency Battery Pack*	EM	_____
HLR/GLR Fuse	FU	_____
Include 3000K Lamp*	L830	_____
Include 3500K Lamp*	L835	_____
Include 4100K Lamp* (MR16 lamps by others)	L841	_____
<b>mr16</b>		
(MR16 location and circuiting must be specified. 50w max.) (Separate feed provided for MR16 circuit unless otherwise specified)		
<b>lamp qty. &amp; gimbal type</b>		
(2FM = two MR16 with flush mount) (Clear lens supplied)		
Flush Mount	__FM	_____
Extended Yoke Gimbal	__EG	_____
<b>mr16 options</b>		
Snoot	SN	_____
Hex Louver	HL	_____
Soft Focus Lens	SFL	_____
Linear Spread Lens	LSL	_____
Prismatic Spread Lens	PSL	_____
Sand Blasted Lens	SBL	_____
<b>finish</b>		
Matte White Housing	WH	_____
Titanium Silver	TS	_____
<b>luminaire length</b>		
Each MR16 module adds 6" to overall length		
4' Nominal Housing	4'	_____
8' Nominal Housing	8'	_____
12' (8'+4')	12'	_____
16' (8'+8')	16'	_____
20' (8'+4'+8')	20'	_____
24' (8'+8'+8')	24'	_____
(See run chart in reference section. Consult factory for additional lengths)		
<b>integrator options</b>		
90° corner	FAVDS-90	_____



\* for more information see Reference section.

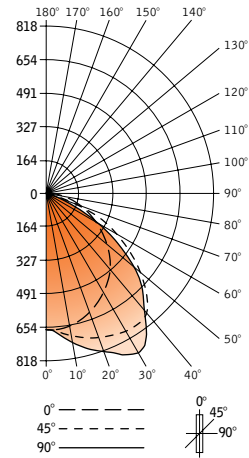
Focal Point LLC | 4141 S. Pulaski Rd, Chicago, IL 60632 | T: 773.247.9494 | F: 773.247.8484 | info@focalpointlights.com | www.focalpointlights.com. Focal Point LLC reserves the right to change specifications for product improvement without notification.

# regress with lens avenue® d



Filename: FAVDSSR1T5.IES  
 Catalog #: FAVDS-SR-1T5-1C-120-S-C24-WH-4'  
 Efficiency: 82%  
 Test #: 26964

## CANDLEPOWER DISTRIBUTION



Spacing 1.7  
 Criterion: 1.7

Vertical Angle	0°	22.5°	45°	67.5°	90°	Zonal Lumens
0°	625	625	625	625	625	
5°	629	629	639	651	649	63
15°	604	640	689	729	740	193
25°	556	633	719	789	818	327
35°	489	598	732	801	797	430
45°	406	543	649	626	618	447
55°	310	468	466	421	396	378
65°	209	317	247	156	129	222
75°	105	132	40	10	4	68
85°	17	1	1	1	1	6
90°	0	0	0	0	0	0
95°	0	0	0	0	0	0
105°	0	0	0	0	0	0
115°	0	0	0	0	0	0
125°	0	0	0	0	0	0
135°	0	0	0	0	0	0
145°	0	0	0	0	0	0
155°	0	0	0	0	0	0
165°	0	0	0	0	0	0
175°	0	0	0	0	0	0
180°	0	0	0	0	0	0

## LUMEN SUMMARY

Zone	Lumens	% Lamp	% Fixt
0°-30°	583	22.4	27.3
0°-40°	1013	39.0	47.5
0°-60°	1838	70.7	86.2
0°-90°	2133	82.1	100.0
<b>Total Luminaire</b>	<b>0°-180° 2133</b>	<b>82.1</b>	<b>100.0</b>

## LUMINANCE DATA (CD/M<sup>2</sup>)

Vertical Angle	0°	45°	90°
45°	6728	10805	10278
55°	6343	9564	8115
65°	5783	6872	3591
75°	4772	1857	183
85°	2315	97	98

## CO-EFFICIENTS OF UTILIZATION

Floor	80	70	20	30	10	00
Wall	70 50 30 10	70 50 10	50 10	50 10	50 10	00
RCR 0	98 98 98 98	95 95 95	91 91	87 87	84 84	82
1	91 88 85 82	89 86 81	82 78	79 76	76 74	72
2	84 78 73 69	82 76 68	74 67	71 65	69 64	62
3	77 69 64 59	75 68 58	66 57	64 56	62 55	54
4	71 62 55 50	69 61 50	59 49	57 49	55 48	46
5	65 55 48 43	63 54 42	52 42	50 42	49 41	39
6	59 49 42 37	58 48 37	47 36	45 36	44 36	34
7	54 44 37 32	53 43 32	42 32	41 31	40 31	29
8	50 39 32 27	49 38 27	37 27	36 27	35 27	25
9	46 35 28 23	45 34 23	33 23	32 23	32 23	21
10	42 31 25 20	41 31 20	30 20	29 20	29 20	19

Numbers indicate percentage values of reflectivity.

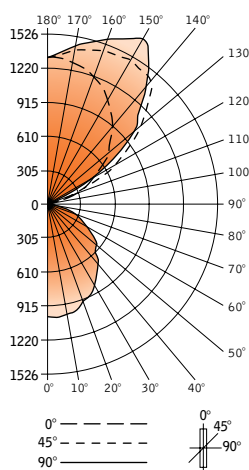
Go to [www.focalpointlights.com](http://www.focalpointlights.com) for additional photometric data.

# flush lens avenue® d



Filename: FAVDSFL11T5H.IES  
 Catalog #: FAVDS-FL-11T5H0-1C-120-S-C24-TS-4'  
 Efficiency: 61%  
 Test #: 15374.0

## CANDLEPOWER DISTRIBUTION



Spacing 1.2  
 Criterion: 1.2

Vertical Angle	0°	22.5°	45°	67.5°	90°	Zonal Lumens
0°	899	899	899	899	899	
5°	904	904	904	907	904	86
15°	873	877	881	881	878	249
25°	794	801	802	801	801	371
35°	681	688	685	683	679	430
45°	534	541	540	536	534	417
55°	428	431	428	425	422	383
65°	283	286	283	282	282	281
75°	144	146	146	146	144	154
85°	38	38	38	38	38	42
90°	0	0	0	0	0	0
95°	14	7	7	7	5	8
105°	133	164	18	10	8	69
115°	324	520	364	182	131	321
125°	531	837	794	691	630	651
135°	692	940	1124	1029	1023	765
145°	867	1065	1304	1405	1397	771
155°	1025	1178	1310	1423	1466	597
165°	1124	1204	181	1336	1353	359
175°	1180	1187	1208	1225	1228	115
180°	1178	1178	1178	1178	1178	

## LUMEN SUMMARY

Zone	Lumens	% Lamp	% Fixt
0°-30°	706	7.1	11.6
0°-90°	2412	24.1	39.8
90°-130°	1050	10.5	17.3
90°-180°	3655	36.6	60.2
<b>Total Luminaire</b>	<b>0°-180° 6067</b>	<b>60.7</b>	<b>100.0</b>

## LUMINANCE DATA (CD/M<sup>2</sup>)

Vertical Angle	0°	45°	90°
45°	8550	8646	8550
55°	8448	8448	8330
65°	7581	7581	7554
75°	6229	6386	6299
85°	4936	4936	4936

## CO-EFFICIENTS OF UTILIZATION

Floor	80	70	20	30	10	00
Wall	70 50 30 10	70 50 10	50 10	50 10	50 10	00
RCR 0	64 64 64 64	58 58 58	47 47	37 37	28 28	24
1	58 56 53 51	53 51 47	41 39	33 31	25 24	21
2	53 49 45 42	48 44 39	37 32	29 26	23 21	18
3	48 43 39 35	44 39 33	32 27	26 23	20 18	15
4	44 38 33 30	40 35 28	29 23	23 19	18 15	13
5	41 34 29 25	37 31 24	26 20	21 17	16 13	11
6	37 30 25 22	34 28 20	23 17	19 15	14 12	10
7	34 27 23 19	31 25 18	21 15	17 13	13 10	8
8	32 25 20 17	29 23 16	19 13	15 11	12 9	7
9	30 22 18 15	27 0 14	17 12	17 10	11 8	6
10	27 20 16 13	25 19 12	16 10	13 9	10 7	6

Numbers indicate percentage values of reflectivity.

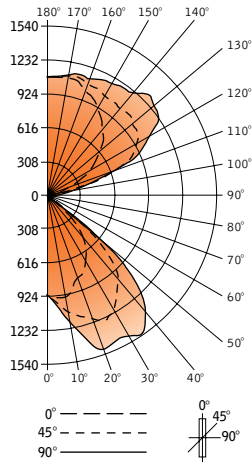
Go to [www.focalpointlights.com](http://www.focalpointlights.com) for additional photometric data.

# louver avenue® d



Filename: FAVDSPL11T5H.IES  
 Catalog #: FAVDS-PL-11T5H0-1C-120-S-C24-TS-4'  
 Efficiency: 71%  
 Test #: 12596.0

## CANDLEPOWER DISTRIBUTION



Spacing 1.2  
 Criterion: 1.8

Vertical Angle	Horizontal Angle				Zonal Lumens
	0°	22.5°	45°	67.5°	
0°	902	902	902	902	902
5°	936	942	955	964	969
15°	918	978	1131	1267	1313
25°	789	938	1257	1442	1473
35°	644	893	1134	1387	1537
45°	452	662	906	1109	1254
55°	112	183	324	358	274
65°	25	30	37	56	49
75°	5	9	9	12	14
85°	0	1	2	2	4
90°	0	1	2	2	2
95°	18	63	32	25	23
105°	162	399	446	389	361
115°	366	606	861	925	929
125°	557	731	1012	1197	1245
135°	731	836	1061	1245	1309
145°	861	914	1044	1161	1203
155°	985	1009	1075	1142	1168
165°	1082	1090	1111	1135	1142
175°	1092	1089	1089	1092	1090
180°	1080	1080	1080	1080	1080

## LUMEN SUMMARY

Zone	Lumens	% Lamp	% Fixt
0°-30°	962	9.6	13.6
0°-90°	2642	26.4	37.4
90°-130°	205	20.5	29.0
90°-180°	4424	44.2	62.6
<b>Total Luminaire</b>	<b>7066</b>	<b>70.7</b>	<b>100.0</b>

## LUMINANCE DATA (CD/M<sup>2</sup>)

Vertical Angle	0°	45°	90°
45°	15163	30392	42066
55°	4632	13399	11331
65°	1403	2077	2750
75°	458	825	1283
85°	0	544	1089

## CO-EFFICIENTS OF UTILIZATION

Floor	Ceiling					
Wall	80	70	50	30	10	00
RCR 0	74	74	74	74	74	74
1	68	65	63	61	62	59
2	63	58	54	51	57	53
3	58	52	47	44	52	47
4	53	46	41	37	48	42
5	49	42	36	32	44	38
6	45	37	32	28	41	34
7	42	34	29	25	38	31
8	38	30	25	22	35	28
9	36	27	22	19	32	25
10	33	25	20	17	30	23

Numbers indicate percentage values of reflectivity.

# avenue d with mr16 standard run length

## avenue d with mr16 – standard configurations

Feed location or direction of fixtures are left to right; specify if otherwise. All configurations have one-piece housings. MR16 sections are 6" in length. MR16 lamps are on a separate circuit.

Example: 18' run = M3M3M-3M3M-3M

