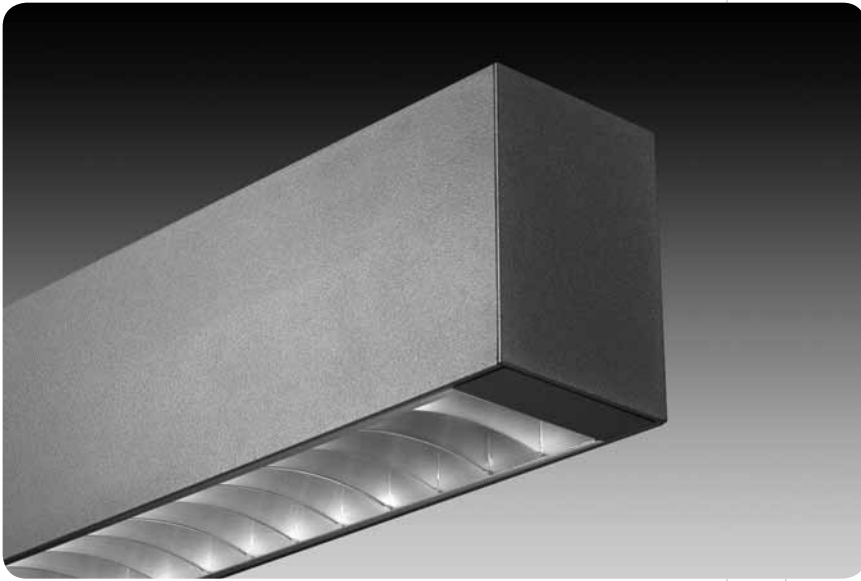


avenue® d



features

Extruded aluminum, suspended direct/indirect or direct linear T5/T5HO fluorescent luminaire.

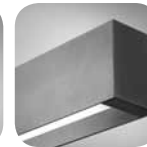
3" aperture rectilinear profile creates sleek aesthetic.

Avenue® D makes an exceptional aesthetic statement in conference rooms, private offices, reception areas or other high-end applications.

shielding options



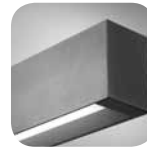
concave parabolic louver



solid regress



flush satin lens



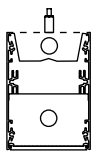
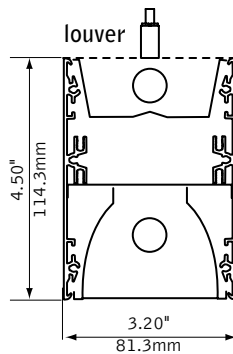
corrugated regress

sensor options

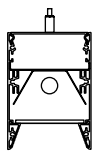


daylight/occupancy sensor

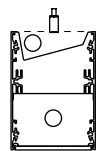
dimensional data



flush lens



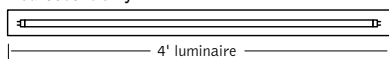
regress (direct only)



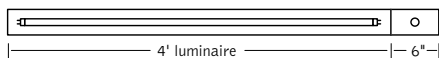
asymmetric (indirect only)

4' example

fluorescent only



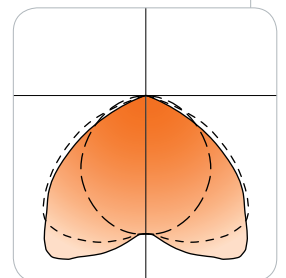
fluorescent with sensor



note: Sensors may be installed in any module length. Sensor location in run must be specified. Sensors are placed on opposite end of power feed. Consult factory for additional placement options

performance

Solid Regress
1-Lamp T5
82% Efficiency
818 cd @ 25°

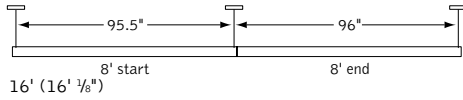
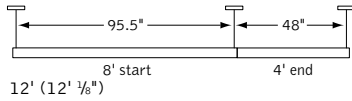
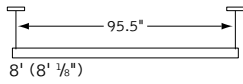
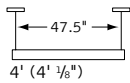


Visit focalpointlights.com for complete photometric data.

fixture:

project:

suspension information



Consult factory for additional row length information. Consult factory for luminaire lengths and suspension points when utilizing sensors.

specifications

construction

Two-piece, .050" thick housing of 6063-T5 extruded aluminum. Corrugated regress trim constructed of 6063-T5 extruded aluminum painted to match fixture. Solid regress trim manufactured with 20 Ga. C.R.S. painted to match fixture. 20 Ga. ballast channel. 16 Ga. internal bulkhead. 14 Ga. steel end caps. All luminaires are provided with single point aircraft cable suspension mounted on 48" and 96" centers.

4' unit weight: 18 lbs
8' unit weight: 32 lbs

optic

Reflectors fabricated of 22 Ga. Steel finished in High Reflectance White powder coat. Regress satin lens: 125" thick opal white with satin finish. Flush satin lens: extruded DR™ acrylic lens .156" thick with opal satin finish. Concave parabolic louver: 1"H x 1" frequency fabricated of low iridescent, semi-specular premium grade aluminum. MR16 lens: .125" thick tempered glass supplied.

electrical

Luminaires are pre-wired with factory installed branch circuit wiring and over-molded quick connects. Electronic fluorescent ballasts are thermally protected and have a Class "P" rating. Optional dimming ballasts available. UL and cUL listed.

sensors

Lutron daylight sensor is a directional sensor that operates with a Lutron EcoSystem ballast (DB). The sensor has an integrated IR receiver for EcoSystem programming.

Philips Luxsense daylight sensor measures reflected light from the surface below and dims lamp output when the light level exceeds required level. Output may be adjusted by turning the dial. A 0-10V dimming ballast is required (T5 - DS, T5HO - D7 standard).

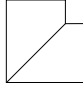
Wattstopper daylight sensor is a closed loop system that measures total light level from daylight and electric light. A 0-10V dimming ballast is required (T5 - DS, T5HO - D7 standard).

Wattstopper occupancy sensor is a passive infrared sensor designed for cubicles and small offices. It has built-in daylight sensing that will hold lights off when adequate ambient light exists. One sensor controls multiple fixtures.

finish

Polyester powder coat applied over a 5-stage pre-treatment.

ordering

luminaire series	FAVDS	FAVDS
Avenue D	FAVDS	_____
shielding		_____
Corrugated Regressed Trim/Satin Lens (Direct only)	CR	_____
Solid Regressed Trim/Satin Lens (Direct only)	SR	_____
Flush Satin Lens	FL	_____
Concave Parabolic Louver	PL	_____
White Concave Parabolic Louver	PW	_____
lamping		_____
One Lamp T5	1T5	_____
One Lamp T5HO (Direct only)	1T5HO	_____
One Lamp Up T5/One Lamp Down	11T5	_____
One Lamp Up T5HO/One Lamp Down	11T5HO	_____
Asymmetric One Lamp Up T5/One Lamp Down	1A1T5	_____
Asymmetric One Lamp Up T5HO/One Lamp Down	1A1T5HO	_____
circuits		_____
Single Circuit	1C	_____
Dual Circuit	2C	_____
Three Circuit	3C	_____
voltage		_____
120 Volt	120	_____
277 Volt	277	_____
ballast		_____
Electronic Program Start <10% THD	S	_____
Electronic Dimming Ballast*	D	_____
suspension		_____
24" Cable Suspension	C24	_____
48" Cable Suspension	C48	_____
96" Cable Suspension	C96	_____
(Specify "J" in place of "C" for 5" dia. canopies at power feed and 2" dia canopies at non-feed locations) (Consult factory for sloped ceiling applications)		_____
Surface Mount (Direct only)	SM	_____
factory options		_____
Opal Acrylic Dust Cover	DC	_____
Emergency Circuit*	EC	_____
Emergency Battery Pack*	EM	_____
HLR/GLR Fuse	FU	_____
Include 3000K Lamp*	L830	_____
Include 3500K Lamp*	L835	_____
Include 4100K Lamp*	L841	_____
Lutron™ Daylight Sensor* (EcoSystem ballast required)	LY1	_____
Lutron™ Sensor Feed* (EcoSystem ballast required)	SF	_____
Philips® Daylight Sensor* (0-10V dimming ballast required)	PY1	_____
WattStopper™ Daylight Sensor* (0-10V dimming ballast required)	WY1	_____
WattStopper™ Occupancy Sensor*	WO1	_____
finish		_____
Matte White Housing	WH	_____
Titanium Silver	TS	_____
luminaire length		_____
(sensor module adds 6" to overall length)		_____
4' Nominal Housing	4'	_____
8' Nominal Housing	8'	_____
12' (8'+4')	12'	_____
16' (8'+8')	16'	_____
20' (8'+4'+8')	20'	_____
24' (8'+8'+8')	24'	_____
(Consult factory for additional lengths)		_____
 integrator options		_____
90° corner	FAVDS-90	_____
remotes		_____
(specify quantity)		_____
WattStopper™ Daylight Setup Remote* (required for daylight programming, one included per order)	WYSR	_____
WattStopper™ Occupant Controller*	WOR	_____

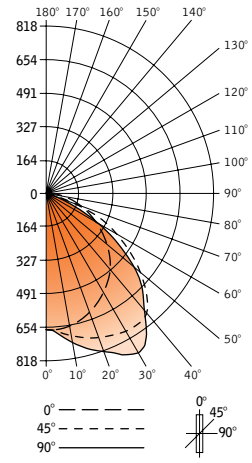
* for more information see Reference section.

regress with lens avenue® d



Filename: FAVDSSR1T5.IES
 Catalog #: FAVDS-SR-1T5-1C-120-S-C24-WH-4'
 Efficiency: 82%
 Test #: 26964

CANDLEPOWER DISTRIBUTION



Spacing 1.7
 Criterion: 1.7

Vertical Angle	0°	22.5°	45°	67.5°	90°	Zonal Lumens
0°	625	625	625	625	625	
5°	629	629	639	651	649	63
15°	604	640	689	729	740	193
25°	556	633	719	789	818	327
35°	489	598	732	801	797	430
45°	406	543	649	626	618	447
55°	310	468	466	421	396	378
65°	209	317	247	156	129	222
75°	105	132	40	10	4	68
85°	17	1	1	1	1	6
90°	0	0	0	0	0	0
95°	0	0	0	0	0	0
105°	0	0	0	0	0	0
115°	0	0	0	0	0	0
125°	0	0	0	0	0	0
135°	0	0	0	0	0	0
145°	0	0	0	0	0	0
155°	0	0	0	0	0	0
165°	0	0	0	0	0	0
175°	0	0	0	0	0	0
180°	0	0	0	0	0	0

LUMEN SUMMARY

Zone	Lumens	% Lamp	% Fixt
0°-30°	583	22.4	27.3
0°-40°	1013	39.0	47.5
0°-60°	1838	70.7	86.2
0°-90°	2133	82.1	100.0
Total Luminaire	0°-180° 2133	82.1	100.0

LUMINANCE DATA (CD/M²)

Vertical Angle	0°	45°	90°
45°	6728	10805	10278
55°	6343	9564	8115
65°	5783	6872	3591
75°	4772	1857	183
85°	2315	97	98

CO-EFFICIENTS OF UTILIZATION

Floor	80	70	20	50	30	10	00
Wall	70	50	30	10	70	50	10
RCR 0	98	98	98	98	95	95	95
1	91	88	85	82	89	86	81
2	84	78	73	69	82	76	68
3	77	69	64	59	75	68	58
4	71	62	55	50	69	61	50
5	65	55	48	43	63	54	42
6	59	49	42	37	58	48	37
7	54	44	37	32	53	43	32
8	50	39	32	27	49	38	27
9	46	35	28	23	45	34	23
10	42	31	25	20	41	31	20

Numbers indicate percentage values of reflectivity.

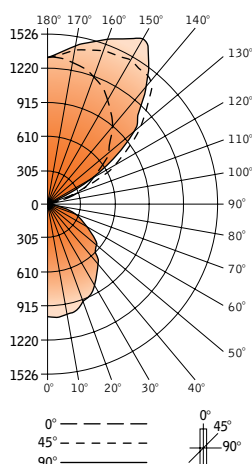
Go to www.focalpointlights.com for additional photometric data.

flush lens avenue® d



Filename: FAVDSFL11T5H.IES
 Catalog #: FAVDS-FL-11T5H0-1C-120-S-C24-TS-4'
 Efficiency: 61%
 Test #: 15374.0

CANDLEPOWER DISTRIBUTION



Spacing 1.2
 Criterion: 1.2

Vertical Angle	0°	22.5°	45°	67.5°	90°	Zonal Lumens
0°	899	899	899	899	899	
5°	904	904	904	907	904	86
15°	873	877	881	881	878	249
25°	794	801	802	801	801	371
35°	681	688	685	683	679	430
45°	534	541	540	536	534	417
55°	428	431	428	425	422	383
65°	283	286	283	282	282	281
75°	144	146	146	146	144	154
85°	38	38	38	38	38	42
90°	0	0	0	0	0	0
95°	14	7	7	7	5	8
105°	133	164	18	10	8	69
115°	324	520	364	182	131	321
125°	531	837	794	691	630	651
135°	692	940	1124	1029	1023	765
145°	867	1065	1304	1405	1397	771
155°	1025	1178	1310	1423	1466	597
165°	1124	1204	181	1336	1353	359
175°	1180	1187	1208	1225	1228	115
180°	1178	1178	1178	1178	1178	

LUMEN SUMMARY

Zone	Lumens	% Lamp	% Fixt
0°-30°	706	7.1	11.6
0°-90°	2412	24.1	39.8
90°-130°	1050	10.5	17.3
90°-180°	3655	36.6	60.2
Total Luminaire	0°-180° 6067	60.7	100.0

LUMINANCE DATA (CD/M²)

Vertical Angle	0°	45°	90°
45°	8550	8646	8550
55°	8448	8448	8330
65°	7581	7581	7554
75°	6229	6386	6299
85°	4936	4936	4936

CO-EFFICIENTS OF UTILIZATION

Floor	80	70	20	50	30	10	00
Wall	70	50	30	10	70	50	10
RCR 0	64	64	64	64	58	58	58
1	58	56	53	51	53	51	47
2	53	49	45	42	48	44	39
3	48	43	39	35	44	39	33
4	44	38	33	30	40	35	28
5	41	34	29	25	37	31	24
6	37	30	25	22	34	28	20
7	34	27	23	19	31	25	18
8	32	25	20	17	29	23	16
9	30	22	18	15	27	0	14
10	27	20	16	13	25	19	12

Numbers indicate percentage values of reflectivity.

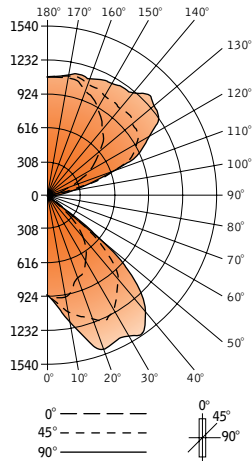
Go to www.focalpointlights.com for additional photometric data.

louver avenue® d



Filename: FAVDSPL11T5H.IES
 Catalog #: FAVDS-PL-11T5H0-1C-120-S-C24-TS-4'
 Efficiency: 71%
 Test #: 12596.0

CANDLEPOWER DISTRIBUTION



Spacing 1.2
 Criterion: 1.8

Vertical Angle	Horizontal Angle				Zonal Lumens
	0°	22.5°	45°	67.5°	
0°	902	902	902	902	902
5°	936	942	955	964	969
15°	918	978	1131	1267	1313
25°	789	938	1257	1442	1473
35°	644	893	1134	1387	1537
45°	452	662	906	1109	1254
55°	112	183	324	358	274
65°	25	30	37	56	49
75°	5	9	9	12	14
85°	0	1	2	2	4
90°	0	1	2	2	2
95°	18	63	32	25	23
105°	162	399	446	389	361
115°	366	606	861	925	929
125°	557	731	1012	1197	1245
135°	731	836	1061	1245	1309
145°	861	914	1044	1161	1203
155°	985	1009	1075	1142	1168
165°	1082	1090	1111	1135	1142
175°	1092	1089	1089	1092	1090
180°	1080	1080	1080	1080	1080

LUMEN SUMMARY

Zone	Lumens	% Lamp	% Fixt
0°-30°	962	9.6	13.6
0°-90°	2642	26.4	37.4
90°-130°	205	20.5	29.0
90°-180°	4424	44.2	62.6
Total Luminaire	7066	70.7	100.0

LUMINANCE DATA (CD/M²)

Vertical Angle	0°	45°	90°
45°	15163	30392	42066
55°	4632	13399	11331
65°	1403	2077	2750
75°	458	825	1283
85°	0	544	1089

CO-EFFICIENTS OF UTILIZATION

	80			70			50			30			10			00		
Floor	70	50	30	10	70	50	30	10	50	10	50	10	50	10	50	10	50	10
Wall	74	74	74	74	67	67	67	67	54	54	42	42	31	31	26	26	26	26
RCR 0	74	74	74	74	67	67	67	67	54	54	42	42	31	31	26	26	26	26
1	68	65	63	61	62	59	56	54	48	46	38	37	29	28	24	24	24	24
2	63	58	54	51	57	53	47	44	44	40	35	32	27	25	22	22	22	22
3	58	52	47	44	52	47	40	39	34	32	28	25	23	23	19	19	19	19
4	53	46	41	37	48	42	35	35	30	29	25	22	20	20	17	17	17	17
5	49	42	36	32	44	38	30	32	26	26	22	20	18	18	15	15	15	15
6	45	37	32	28	41	34	27	29	23	24	19	19	16	16	14	14	14	14
7	42	34	29	25	38	31	23	26	20	21	17	17	14	14	12	12	12	12
8	38	30	25	22	35	28	20	23	18	19	15	15	12	12	10	10	10	10
9	36	27	22	19	32	25	18	21	15	17	13	14	11	11	09	09	09	09
10	33	25	20	17	30	23	16	19	14	16	11	12	09	08	08	08	08	08

Numbers indicate percentage values of reflectivity.

