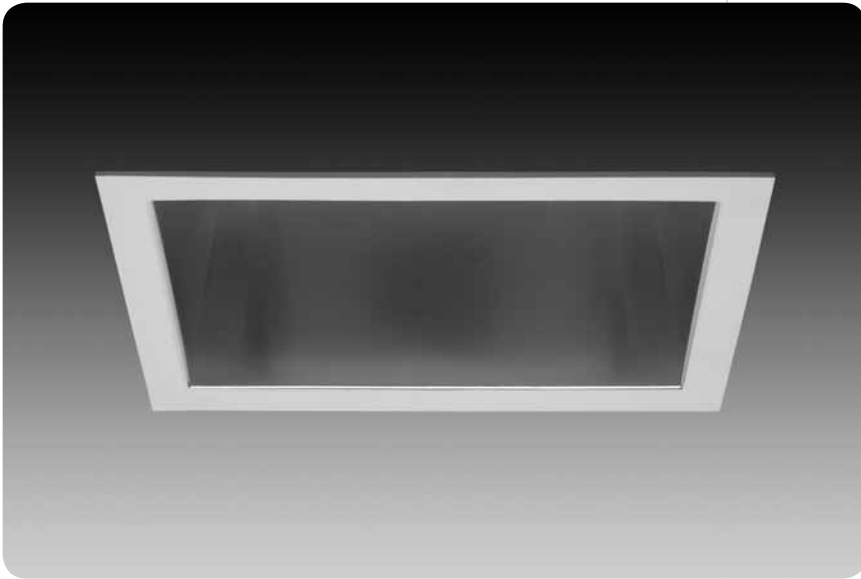


4.5" x 6.75" – downlight

id®



CFL



features

Overlap trim features:

- One piece die-cast construction creates seamless integration with reflector eliminating mitered corners.
- Die-cast flange maintains tight fit of reflector corners.
- **SmartLock™** clip allows for quick removal and re-assembly of trim components for field painting.

Flush trim features:

- Minimal .225" thick self flanged trim integrates seamlessly into drywall ceilings.
- Flush flange requires no field painting.

Centered optics achieved with **CenterLock™** die-cast socket cup which locates and locks 32 or 42 watt lamp in center of aperture.

LampAlign™ allows installation of upper reflector in any direction regardless of housing direction. Lamps are aligned for consistent appearance and light distribution.

Reflector design eliminates tabs in corners for a seamless look with no light leaks.

1" tall housing collar rotates up to 35° for easy alignment.

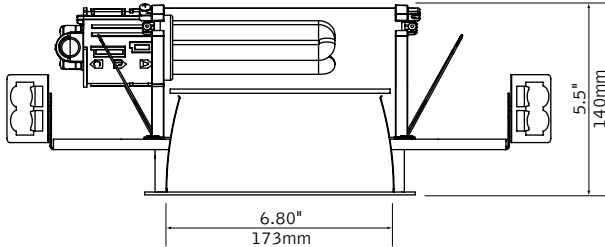
55-degree cut-off to lamp and its image.

lens option

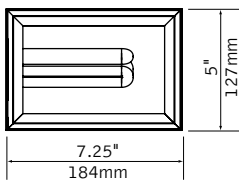


MicroGlow

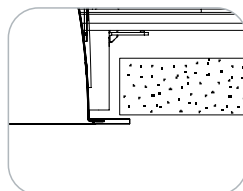
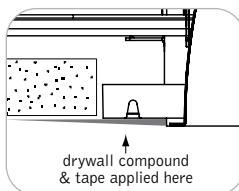
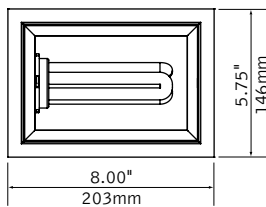
dimensional data



flush trim

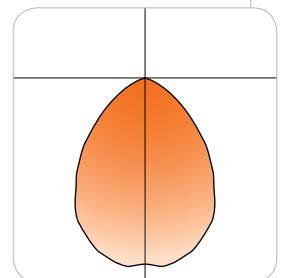


overlap trim



performance

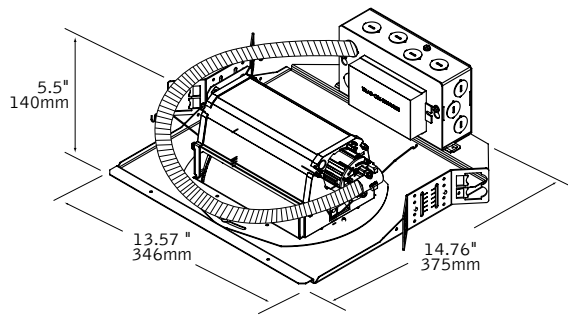
1-Lamp 42W Triple Tube
 Downlight Optic, Clear Diffuse
 38% Efficiency
 771 cd @ 5°



Visit focalpointlights.com for complete photometric data.

fixture:
project:

details



specifications

housing

Frame features up to 35-degree locking adjustment of aperture after installation for parallel alignment to walls or adjacent fixtures.

Frame may be installed into ceiling thicknesses up to 1". For thicker ceiling consult factory.

Flex conduit with screw tight fittings mechanically fasten to CenterLock™ socket cup. CenterLock™ provides proper venting for lamps.

Butterfly brackets allow mounting to ½ emt. Order bar hangers as an accessory. Galvanized steel frame includes large Junction box 7" x 3.5" with (10) ½" pry outs. UL listed for through branch wiring, four #12 90°C conductors.

upper reflector

Multi-faceted steel upper reflector mounts to die cast end caps and is finished in High Reflectance White powder coat. Lamp always maintains proper center location in optic due to the adjustable locking, keyed socket cup which ensures optimal lamp location for 26, 32 or 42 watt lamps.

trim

Lower reflector provides 55-degree cut off to lamp and lamp image.

.125" thick MicroGlow™ micro prism lens provides uniform distribution, lamp obscuration.

Parabolic aluminum fastens to die-cast flange on overlap trim. Flush trim option for drywall installations features a minimal reflector flange.

Trim attaches to upper reflector via torsion springs.

Consult factory for custom reflector finishes.

Upper reflector and lower reflector ship separately from housing frame to avoid construction abuse.

electrical

Luminaires are pre-wired for single circuit with thermally protected Class "P" program start <10% THD electronic ballast.

Consult factory for dimming specifications and availability.

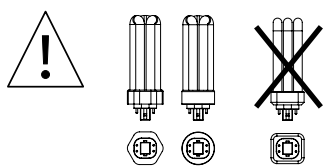
UL Listed.

Integral emergency battery test switch and indicator light in optic.

Rotary lock socket allows for easy lamp removal and reduces lamp breakage.

One lamp triple tube compact fluorescent, 26W/32W (Gx24q-3), 42W (Gx24q-4). OSI and GE lamps only.

finish



Trim flange, end caps and upper reflector finished in polyester powder coat over a 5-stage pre-treatment.

housing ordering

housing series	FC46
ID CFL Rectangular Housing	FC46
lamp (OSI & GE lamps only)	
26W Triple Tube, Gx24q-3 (Includes wattage restriction label)	26TT
32W Triple Tube, Gx24q-3 (Includes wattage restriction label)	32TT
42W Triple Tube, GX24q-4	42TT
ballast	
Electronic Program Start <10% THD	S
Electronic Dimming Ballast*	D
voltage	
120V	120
277V	277
347V	347
faceplate type	
Square Flush	SF
Square Overlap	SO
housing type	T
Thermally Protected, Non-IC	T
factory options	
Chicago Plenum	CP
Emergency Battery Pack*	EM
HLR/GLR Fuse	FU
Include 3000K Lamp	L830
Include 3500K Lamp	L835
Include 4100K Lamp	L841

trim ordering

trim aperture	D46
4.5" x 6.75" Aperture	D46
faceplate type	
Square Flush	SF
Square Overlap	SO
optic	
Downlight	DN
Regress MicroGlow Lens	RLMG
color	
Clear Specular	CS
Clear Diffuse	CD
Warm Diffuse	WD
Silver Talc Diffuse	TD
flange finish (for SO option only)	
White	WH
Black	BK
Titanium Silver	TS
Aluminum Raw	AL

a complete unit consists of two line items, housing and trim
example: FC46-32TT-S-120-SO-T
D46-SO-DN-CD-WH

* for more information see Reference section.

