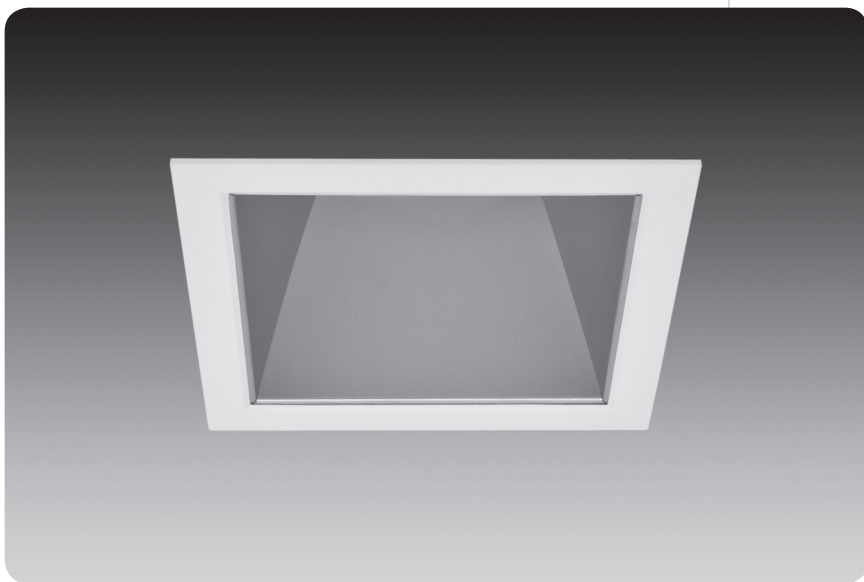


4.5"x4.5" – led downlight
with emergency battery

id®



features

LED module features remote phosphor technology enabling a high system efficacy and minimum 80 CRI.

Battery pack delivers emergency light levels and is compatible with all available LED modules. Integral or remote test switch available.

Future-proof LED system design maintains form factor, lumen output, and thermal characteristics of module and driver as technology advances, allows for easy replacement and upgrades.

1300 Lumen module is Energy Star qualified, 1100 Lumen module is built to Energy Star standards.

Rated life is 50,000 hours at 70% lumen maintenance (L70).

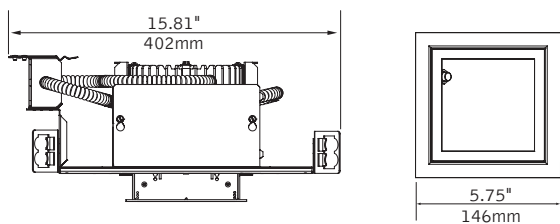
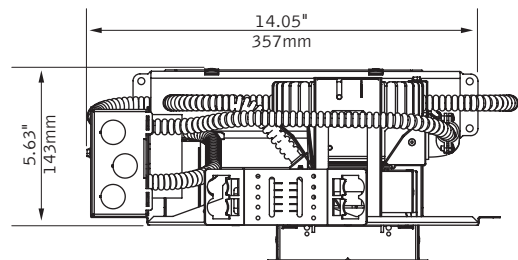
Flicker-free 0-10V analog dimming capability standard.

Housing design allows die-cast trim flange to rotate to align with architecture and adjacent luminaires.

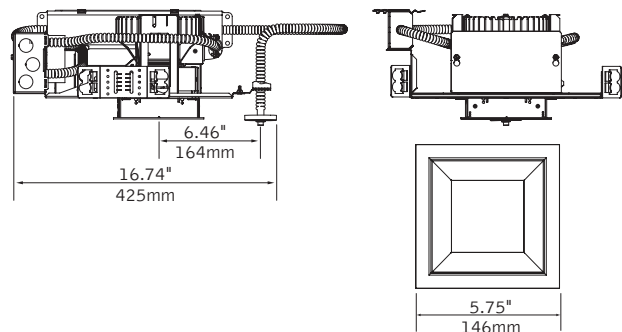
Clear Diffuse reflector cone features superior brightness control and 55 degree cutoff to light source and its image.

dimensional data

integral test switch (em)–above ceiling access



remote test switch (emr)–above ceiling access



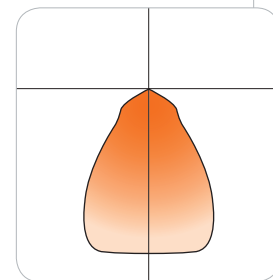
performance

17.46W, 3000K, 1100 Lumen LED Module
Clear Diffuse Reflector
Total Luminaire Output: 784lms

Photometric performance is measured in accordance with IESNA LM-79.



Use 1300 lumen LED downlight in place of a 6" 32W compact fluorescent

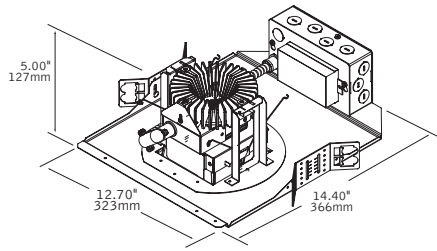


Visit focalpointlights.com for complete photometric data.

fixture:

project:

details



housing specifications

led system

Powered by Philips' Fortimo™ LED DLM, Advance Xitanium LED driver and communication cable. Aluminum heat sink provides appropriate thermal management. System is future-proof, allowing for easy replacement and upgrades as LED technology advances.

led module

Philips' Fortimo™ LED DLM features patented remote phosphor technology for superior efficacy and color consistency. Module may be specified in 3000K, 3500K or 4000K, CRI>80.

construction

Thermally protected housing for new construction applications. Insulation to be kept 3" away from housing. Butterfly brackets allow mounting to ½ emt. Order bar hangers as an accessory. Die-cast aluminum heat sink designed for maximum thermal dissipation. Die-formed housing and integral junction box with (7) 1/2" pry outs. Accommodates ceiling thicknesses up to 1". For thicker ceiling consult factory. Fixture will not exceed 5 lb.

electrical

Advance Xitanium multi-volt 120V-277V constant current driver includes standard 0-10V analog dimming. Power factor >.9 typical, 50/60Hz., 200-700mA, input power range, 17-23.5w. "Thermal Guard" offers protection from overheating in abnormal conditions; driver will dim DLM if necessary. Voltage specific thermal protectors included standard.

Color Temp	Rated System Watts	Delivered Lumens	Lumens/Watts
1100 Lumen Module			
3000K	19.0	784	41.3
3500K	18.0	784	43.6
4000K	17.0	784	46.1

*Lumen rating based on Clear Diffuse reflector cone

*Lumen output may vary +/- 5%

*Actual wattage may vary +/- 5%

*Module output is identical for all available color temperatures.

emergency battery

Bodine BSL17C-C2.

Emergency output—660 module lumens for all available models.

dimming

0-10V DC low voltage dimming capability is included with the standard Advance Xitanium driver. Dimming range is to 10% light output, some dimmers may require high and/or low end trim adjustment for proper function. Consult the [ID LED Technical Guide](#) for compatible dimmers and control systems.

labels

UL and cUL Listed. Lensed trims suitable for Wet Location.

lifetime & warranty

LED System rated for 50,000 hours at 70% lumen output (L70). Rated life and lumen output based on maximum temperature of 65°C at Tc point on LED module. If Tc temperature rises above rated maximum due to end use conditions, lifetime and lumen output may decrease. 5 year limited warranty on LED system provided by Philips.

trim specifications

aesthetics

Die-formed aluminum reflector ensures glare free optics. Reflector attaches to die-cast, seamless flange and may be removed for field painting.

Torsion springs pull trim tight to the ceiling with no visible fasteners within the trim.

Trim position rotates up to 110° for fine adjustment.

optics

55-degree cut-off to light source and its image.

housing ordering

housing series		<u>FL44</u>
ID LED Square	FL44	
led module		
1100 Lumen LED Module	11LED	
1300 Lumen LED Module	13LED	
color temperature		
3000K	L30	
3500K	L35	
4000K	L40	
voltage		
120V	120	
277V	277	
trim type		<u>S0</u>
Square Overlap	S0	
housing type		<u>T</u>
Thermally Protected, Non-IC	T	
factory options		
Emergency Battery Pack with Integral Test Switch	EM	
Emergency Battery Pack with Remote Test Switch	EMR	

trim ordering

aperture		
4.5" Square Reflector (required for "EMR" option)	L44	
4.5" Square EM Open Reflector (required for "EM" option)	L44EM	
trim type		<u>S0</u>
Square Overlap	S0	
optic		
Downlight	DN	
Regress MicroGlow Lens (wet location)	RLMG	
color		
Clear Diffuse	CD	
Warm Diffuse	WD	
Silver Talc Diffuse	TD	
flange finish		
White	WH	
Black	BK	
Titanium Silver	TS	
Aluminum Raw	AL	

a complete unit consists of two line items, housing and trim

example:
FL44-13LED-L30-120-S0-T-EM
L44EM-S0-DN-CD-WH



id led—emergency battery ordering

4.5" Round

	Integral Test Switch		Remote Test Switch	
	Housing	Trim	Housing	Trim
Downlight (DN)	EM	L4EM (Truncated Reflector)	EMR	L4
Downlight w/Regress Lens (RL)	XX	XX	EMR	L4
Wall Wash (WW)	XX	XX	EMR	L4

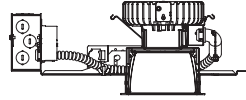
4.5" × 4.5" Square

	Integral Test Switch		Remote Test Switch	
	Housing	Trim	Housing	Trim
Downlight (DN)	EM	L44EM (Open Reflector)	EMR	L44
Downlight w/Regress Lens (RL)	EM	L44EM (Open Reflector)	EMR	L44
Wall Wash (WW)	EM	L44	EMR	L44
Decorative Lens	EM	L44	EMR	L44

6" Round

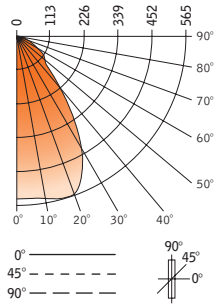
	Integral Test Switch		Remote Test Switch	
	Housing	Trim	Housing	Trim
Downlight (DN)	EM	L6EM (Accommodates Test Switch)	EMR	L6
Downlight w/Regress Lens (RL)	EM	L6EM (Accommodates Test Switch)	EMR	L6
Wall Wash (WW)	EM	L6	EMR	L6

4.5" x 4.5"-led downlight
id®



Filename: FL44DNCD13LEDL35.IES
Catalog #: FL44-13LED-L35-120-S0-T, L44-S0-DN-CD-WH
Photometric Report #: 20101

CANDLEPOWER DISTRIBUTION



Vertical Angle	Horizontal Angle				Zonal Lumens
	0°	22.5°	45°	67.5°	
0°	530	530	530	530	530
5°	531	532	531	532	51
15°	547	547	548	546	155
25°	500	526	569	525	241
35°	326	374	417	370	229
45°	146	171	176	164	131
55°	106	94	53	93	77
65°	53	45	32	46	45
75°	21	17	14	18	19
85°	3	2	2	2	3
90°	0	0	0	0	0

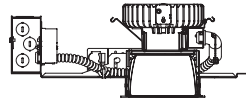
LUMEN SUMMARY

	Zone Lumens	% Fixt
0°-30°	447	47.0
0°-40°	676	71.1
0°-60°	884	93.0
0°-90°	952	100.0
Total Luminaire	0°-90°	952 100.0

Spacing Criteria:
1.2

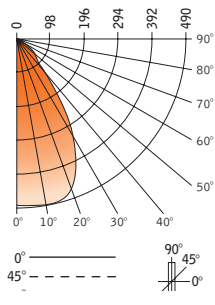
Go to www.focalpointlights.com for additional photometric data.

4.5" x 4.5"-led downlight
id®



Filename: FL44DNCD11LEDL35.IES
Catalog #: FL44-11LED-L35-120-S0-T, L44-S0-DN-CD-WH
Photometric Report #: 20105

CANDLEPOWER DISTRIBUTION



Vertical Angle	Horizontal Angle				Zonal Lumens
	0°	22.5°	45°	67.5°	
0°	484	484	484	484	484
5°	484	484	484	485	46
15°	483	485	487	486	137
25°	409	432	461	429	196
35°	233	264	293	261	162
45°	90	94	94	91	76
55°	59	49	31	49	42
65°	32	24	16	24	24
75°	14	10	7	8	10
85°	2	1	0	0	1
90°	0	0	0	0	0

LUMEN SUMMARY

	Zone Lumens	% Fixt
0°-30°	380	54.7
0°-40°	541	78.0
0°-60°	658.7	94.9
0°-90°	694	100.0
Total Luminaire	0°-90°	694 100.0

Spacing Criteria:
1.1

Go to www.focalpointlights.com for additional photometric data.