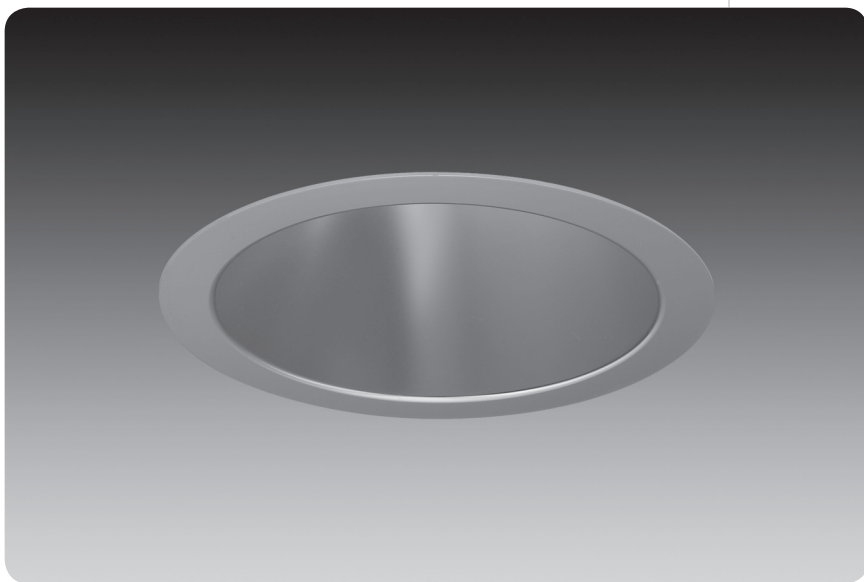


4.5" – led downlight
id® with emergency battery



features

LED module features remote phosphor technology enabling a high system efficacy and minimum 80 CRI.

Battery pack delivers emergency light levels and is compatible with all available LED modules. Integral or remote test switch available.

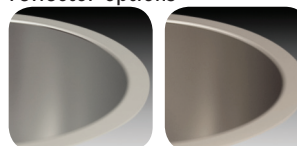
Future-proof LED system design maintains form factor, lumen output, and thermal characteristics of module and driver as technology advances, allows for easy replacement and upgrades.

1300 Lumen module is Energy Star qualified, 1100 Lumen module is built to Energy Star standards.

Flicker-free 0-10V analog dimming capability standard.

Self-flanged Clear Diffuse reflector cone features superior brightness control and 50 degree cutoff to light source and its image.

reflector options

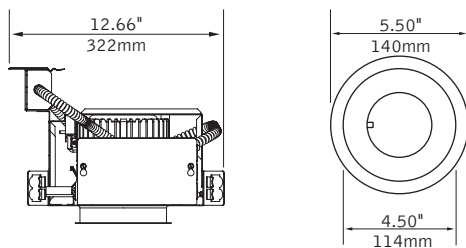
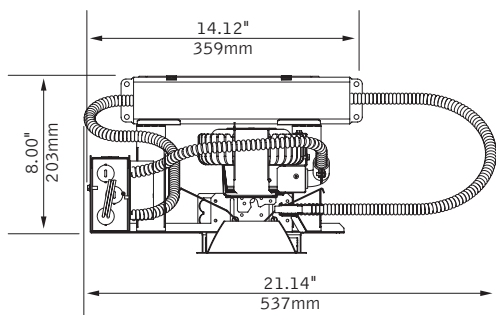


clear diffuse

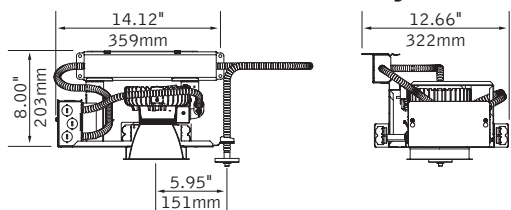
warm diffuse

dimensional data

integral test switch (em)–above ceiling access



remote test switch (emr)–above ceiling access

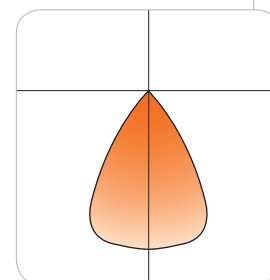


performance

23W, 3500K, 1300 Lumen LED Module
 Clear Diffuse Reflector
 Total Luminaire Output: 1101lms
 Photometric performance is measured in accordance with IESNA LM-79.



Use 1300 lumen LED downlight in place of a 6\"/>



Visit focalpointlights.com for complete photometric data.

fixture:

project:

housing specifications

led system

Powered by Philips' Fortimo™ LED DLM, Advance Xitanium LED driver and communication cable. Aluminum heat sink provides appropriate thermal management. System is future-proof, allowing for easy replacement and upgrades as LED technology advances.

led module

Philips' Fortimo™ LED DLM features patented remote phosphor technology for superior efficacy and color consistency. Module may be specified in 3000K, 3500K or 4000K, CRI>80.

construction

Thermally protected housing for new construction applications. Insulation to be kept 3" away from housing. Butterfly brackets allow mounting to ½ emt. Order bar hangers as an accessory. Die-cast aluminum heat sink designed for maximum thermal dissipation. Die-formed housing and integral junction box with (7) 1/2" pry outs. Accommodates ceiling thicknesses up to 1". For thicker ceiling consult factory. Fixture will not exceed 5 lb.

electrical

Advance Xitanium multi-volt 120V-277V constant current driver includes standard 0-10V analog dimming. Power factor >.9 typical, 50/60Hz., 200-700mA, input power range, 17-23.5w. "Thermal Guard" offers protection from overheating in abnormal conditions; driver will dim DLM if necessary. Voltage specific thermal protectors included standard.

emergency battery

Bodine BSL17C-C2.

Emergency output—660 module lumens for all available models.

1100 Lumen Module

Color Temp	Rated System Watts	Delivered Lumens	Lumens/Watt
3000K	19.0	901	47.4
3500K	18.0	901	50.1
4000K	17.0	901	53

1300 Lumen Module

Color Temp	Rated System Watts	Delivered Lumens	Lumens/Watt
3000K	23.5	1101	46.9
3500K	23.0	1101	47.9
4000K	21.0	1101	52.4

*Lumen rating based on Clear Diffuse reflector cone

*Lumen output may vary +/- 5%

*Actual wattage may vary +/- 5%

*Module output is identical for all available color temperatures.

dimming

0-10V DC low voltage dimming capability is included with the standard Advance Xitanium driver. Dimming range is to 10% light output, some dimmers may require high and/or low end trim adjustment for proper function. Consult the [ID LED Technical Guide](#) for compatible dimmers and control systems.

labels

UL and cUL Listed. Lensed trims suitable for Wet Location, label included.

lifetime & warranty

LED System rated for 50,000 hours at 70% lumen output (L70). Rated life and lumen output based on maximum temperature of 65°C at Tc point on LED module. If Tc temperature rises above rated maximum due to end use conditions, lifetime and lumen output may decrease. 5 year limited warranty on LED system provided by Philips.

trim specifications

aesthetics

Parabolic reflector cone ensures glare free optics. Reflector is .050 spun aluminum. Torsion springs pull trim tight to the ceiling with no visible fasteners within the trim. Specify truncated reflector for compatibility with EM option. Overlap trims are self-flanged. Non-painted trim matches reflector finish. White painted flange may also be specified.

optics

50-degree cut-off to light source and its image. Optional regressed Solite softening lens.

housing ordering

housing series		<u>FL4D</u>
ID LED Round	FL4D	
led module		
1100 Lumen LED Module	11LED	
1300 Lumen LED Module	13LED	
color temperature		
3000K	L30	
3500K	L35	
4000K	L40	
voltage		
120V	120	
277V	277	
trim type		<u>RO</u>
Round Overlap	RO	
housing type		<u>T</u>
Thermally Protected, Non-IC	T	

factory options

Emergency Battery Pack with Integral Test Switch (Must order L4EM trim)	EM
Emergency Battery Pack with Remote Test Switch (Must order L4 trim)	EMR

trim ordering

aperture		
4.5" Truncated Round EM Reflector (Required for "EM" option)	L4EM	
4.5" Round Reflector (Required for "EMR" option)	L4	
trim type		<u>RO</u>
Round Overlap	RO	
optic		
Downlight	DN	
Regress Frosted Lens (wet location) (L4 reflectors only)	RL	
color		
Clear Diffuse	CD	
Warm Diffuse	WD	
flange finish		
Non-Painted	NP	
White Painted	WP	

a complete unit consists of two line items, housing and trim

example:

FL4D-13LED-L30-120-RO-T-EM
L4EM-RO-DN-CD-NP



id led—emergency battery ordering

4.5" Round

	Integral Test Switch		Remote Test Switch	
	Housing	Trim	Housing	Trim
Downlight (DN)	EM	L4EM (Truncated Reflector)	EMR	L4
Downlight w/Regress Lens (RL)	XX	XX	EMR	L4
Wall Wash (WW)	XX	XX	EMR	L4

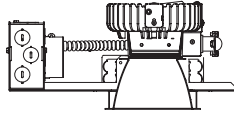
4.5" × 4.5" Square

	Integral Test Switch		Remote Test Switch	
	Housing	Trim	Housing	Trim
Downlight (DN)	EM	L44EM (Open Reflector)	EMR	L44
Downlight w/Regress Lens (RL)	EM	L44EM (Open Reflector)	EMR	L44
Wall Wash (WW)	EM	L44	EMR	L44
Decorative Lens	EM	L44	EMR	L44

6" Round

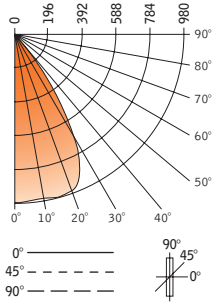
	Integral Test Switch		Remote Test Switch	
	Housing	Trim	Housing	Trim
Downlight (DN)	EM	L6EM (Accommodates Test Switch)	EMR	L6
Downlight w/Regress Lens (RL)	EM	L6EM (Accommodates Test Switch)	EMR	L6
Wall Wash (WW)	EM	L6	EMR	L6

4.5" – led downlight
id®



Filename: FL4DNC13LEDL35.IES
Catalog #: FL4D-13LED-L35-R0-T, L4-R0-DN-CD
Photometric Report #: 27040

CANDLEPOWER DISTRIBUTION



Vertical Angle	0°	Zonal Lumens
0°	975	
5°	975	94
15°	979	276
25°	898	399
35°	987	250
45°	79	67
55°	9	9
65°	3	3
75°	1	1
85°	0	0
90°	0	

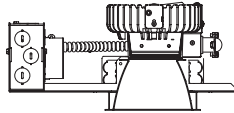
LUMEN SUMMARY

Zone	Lumens	% Fixt
0°-30°	770	69.94
0°-40°	1020	92.68
0°-60°	1096	99.58
0°-90°	1101	100.0
Total Luminaire	0°-90°	1101 100.0

Spacing Criteria:
1.0

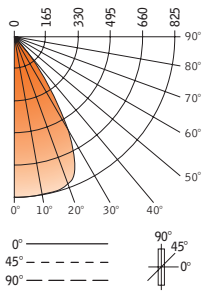
Go to www.focalpointlights.com for additional photometric data.

4.5" – led downlight
id®



Filename: FL4DNC11LEDL35.IES
Catalog #: FL4D-11LED-L35-R0-T, L4-R0-DN-CD
Photometric Report #: 27040

CANDLEPOWER DISTRIBUTION



Vertical Angle	0°	Zonal Lumens
0°	827	
5°	826	80
15°	822	232
25°	743	329
35°	307	199
45°	60	52
55°	7	7
65°	2	2
75°	0	1
85°	0	0
90°	0	

LUMEN SUMMARY

Zone	Lumens	% Fixt
0°-30°	641	71.16
0°-40°	839	93.21
0°-60°	898	99.68
0°-90°	901	100.00
Total Luminaire	0°-90°	901 100.00

Spacing Criteria:
0.9

Go to www.focalpointlights.com for additional photometric data.