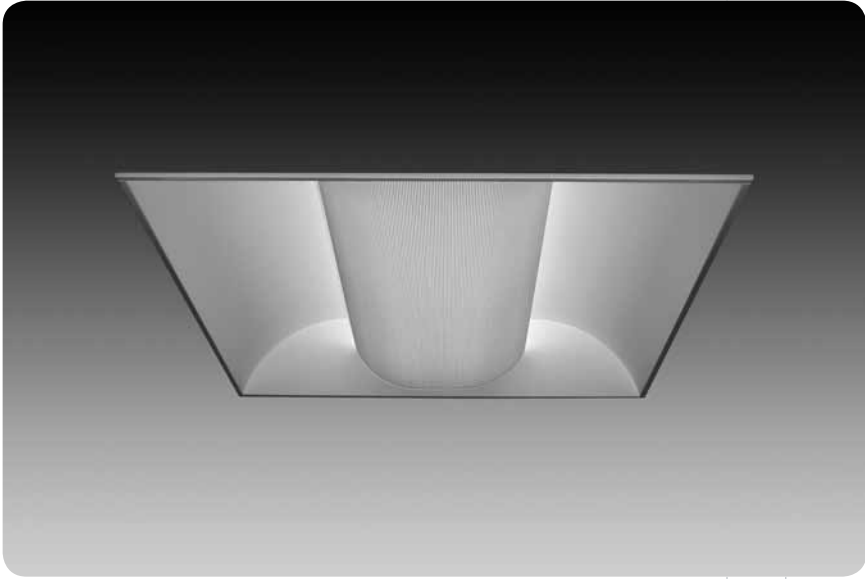


Armstrong® DC FlexZone™ Compatible  
**luna® family**



Covered by U.S. Patent No. D395,727.

**features**

2'x2' and 2'x4' recessed indirect with an 8" or narrow 4" perforated center basket.

Now with EMerge Alliance® Registered options compatible with Armstrong DC FlexZone ceilings for plug-and-play flexibility in DC power applications.

Reflector and end caps form seamless one-piece housing.

High reflectance, low gloss Matte White finish controls glare and provides high efficiency.

Perforated shields snap out for easy relamping.

All luminaire combinations may be continuously row mounted.

Luna® provides high angle uniform distribution ideal for general illumination

**shielding options**

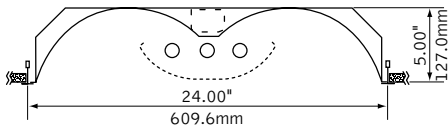


Standard 8" basket

Narrow 4" basket

**dimensional data**

**standard 8" basket**



**lamping options**

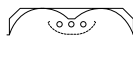
**2'x2'**



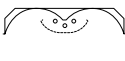
BIAX LAMPS



T8 LAMPS



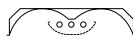
T5H0 LAMPS



**2'x4'**



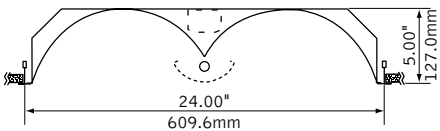
T8 LAMPS



T5/T5H0 LAMPS



**narrow 4" basket**

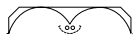


**lamping options**

**2'x2'**



T5H0 LAMPS



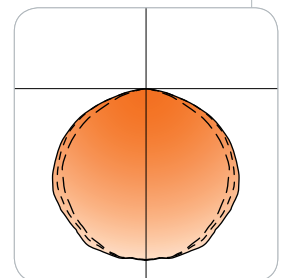
**2'x4'**



T5/T5H0 LAMPS

**performance**

2'x4' Narrow 4" Basket  
 1-Lamp T5H0  
 87% Efficiency  
 1400 cd @ 0°



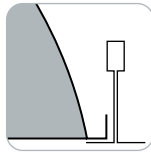
Visit [focalpointlights.com](http://focalpointlights.com) for complete photometric data.

fixture:

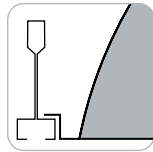
project:

### mounting information

Armstrong® DC FlexZone™ compatible



"G" flat tee



"ST" slot tee

### specifications

#### construction

One-piece 20 Ga. steel reflector and housing.

20 Ga. steel ends form finished housing.

Lamps are shielded by detachable 22 Ga. steel perforated lamp shield with acrylic lens insert.

Top access 20 Ga. steel ballast compartment.

#### Weight:

2"x2": 20 lbs

2"x4": 29 lbs

#### optic

One-piece 20 Ga. steel reflectors finished in Matte Satin White powder coat.

#### electrical

Class 2 low voltage DC ballasts have a Class "P" rating.

UL Listed.

#### Ballast Factors:

0.78 - 54W T5H0 & 55W Biax

0.75 - 32W T8 (2 lamp)

1.00 - all others

0-10V dimming standard.

Load cable assembly connects fixture to low voltage bus bar.

#### finish

Polyester powder coat applied over a 5-stage pre-treatment.



### ordering

luminaire series FLU  
Luna FLU

nominal size \_\_\_\_\_  
2' x 2' 22  
2' x 4' 24

distribution B  
Bi-Directional B

lamp quantity \_\_\_\_\_  
One Lamp 1  
(narrow 4" basket only)  
Two Lamp 2  
Three Lamp 3  
(2x2 - T8 & T5H0, 2x4 - T8 & T5  
Standard 8" basket only)

lamp type \_\_\_\_\_  
40 Watt Biax BX40  
(2x2 only)  
55 Watt Biax BX55  
(2x2 only)  
T5 T5  
(2x4 only)  
T5H0 T5H0  
(2x4 - 1-lamp only)  
T8 T8

ballast DCF  
DC 0-10V Dimming Ballast DCF

voltage 24  
24 Volt 24

mounting \_\_\_\_\_  
DC Suprafine® 9/16" Grid G  
DC Silhouette® 9/16" Slot Tee ST

shielding \_\_\_\_\_  
Narrow 4" Basket NB  
(leave blank for standard 8" basket)

factory options \_\_\_\_\_  
Include 3000K Lamp\* L830  
Include 3500K Lamp\* L835  
Include 4100K Lamp\* L841

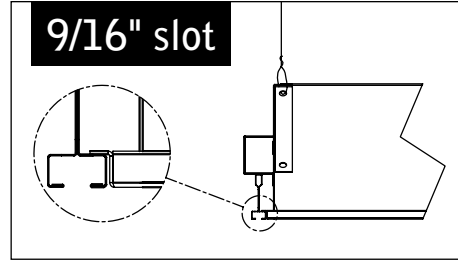
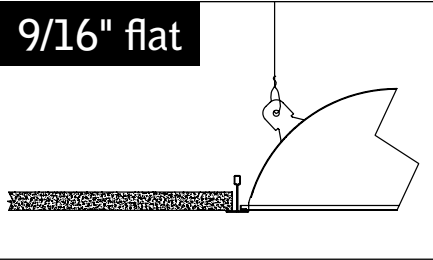
finish WH  
Matte Satin White WH

\* for more information see Reference section.

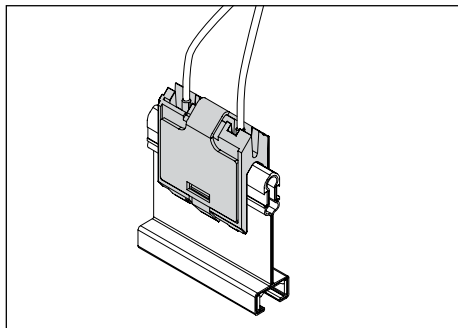
Focal Point LLC | 41.41 S. Pulaski Rd, Chicago, IL 60632 | T: 773.247.9494 | F: 773.247.8484 | info@focalpointlights.com | www.focalpointlights.com.  
Focal Point LLC reserves the right to change specifications for product improvement without notification.



## SECURE HOUSING TO STRUCTURE ABOVE

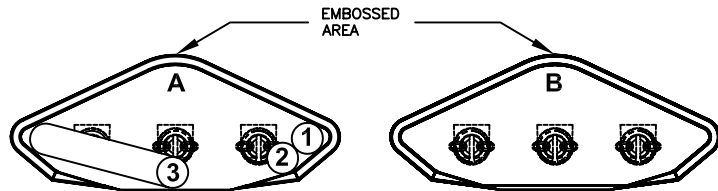


INSULATORS (SUPPLIED) MUST BE PLACED BETWEEN OPTIONAL EARTHQUAKE CLIPS AND DC MAIN TEE.



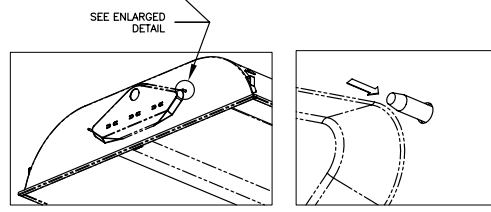
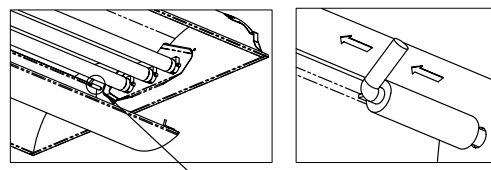
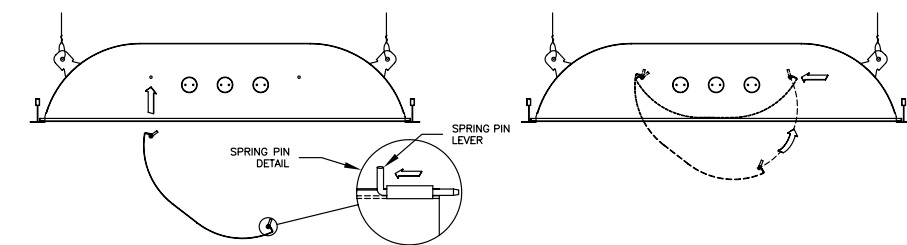
ATTACH TYCO CONNECTOR (SUPPLIED) TO DC POWERED MAIN TEE

## LAMPING



ALL LAMPS MUST FIRST BE POSITIONED INSIDE OF EMBOSSSED AREA BEFORE ENGAGING LAMP HOLDERS (A). THIS IS MOST IMPORTANT FOR 3 LAMP T8. ONCE ALL LAMPS HAVE BEEN POSITIONED INSIDE EMBOSSSED AREA THEY CAN THEN BE ENGAGED ON THE LAMP HOLDERS (B)

## SHIELDING



### INSTALLATION:

GRASP SHIELD SPRING PIN LEVERS (ON ONE SIDE OF THE BASKET) AND COMPRESS LIGHTLY. PUSH SHIELDING INTO LUMINAIRE HOUSING AND ALIGN PINS WITH MOUNTING HOLES. AFTER ONE SIDE IS ENGAGED, BASKET SWINGS FREELY. GRASP SPRING PIN LEVERS ON LOOSE SIDE OF BASKET AND REPEAT PROCEDURE.

### REMOVAL:

LOCATE SPRING PIN LEVERS ON ONE SIDE OF SHEILD. COMPRESS LIGHTLY AND RELEASE PINS FROM MOUNTHING HOLES. BASKET SWINGS FREELY ON REMAINING PINS, RELEASE REMAINING PINS TO REMOVE BASKET.

Luminaires must be installed by a qualified electrician (check with local and national codes for proper installation). To prevent electrical shock, disconnect electrical supply before installation or servicing.

