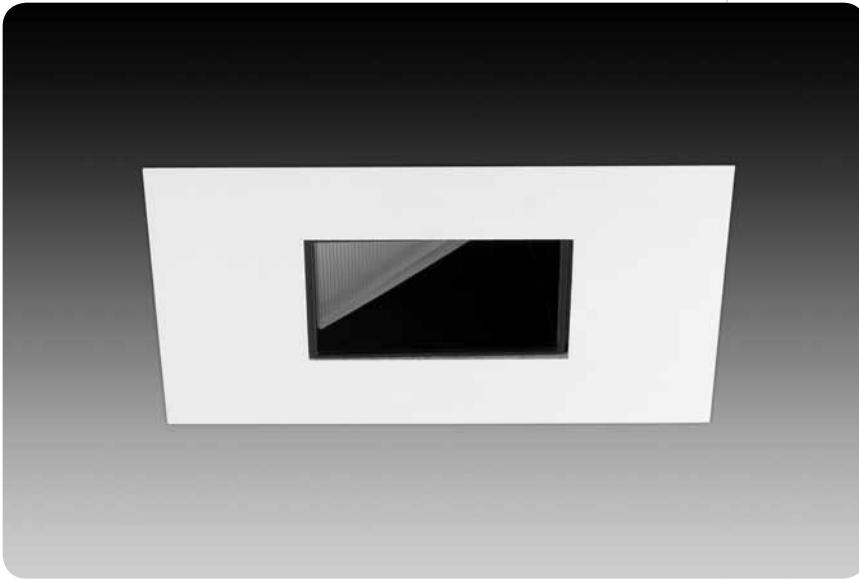


wall wash
id®



Covered by US Patent: 7,748,868

features

Wall Wash offers a parabolic 50 degree cut-off reflector.

Trims available in Overlap flange or Flush mud-in for a seamless appearance.

Gloves Off™ hot aiming made simple with gear drive for both 10° vertical and 363° horizontal adjustment; Self locking.

Adjustment mechanism provides for:

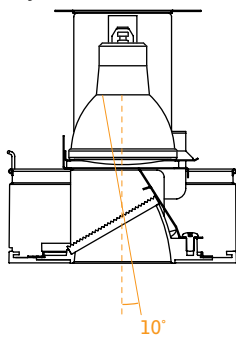
- easy relamping
- locking of both vertical and horizontal aiming
- lowers for easy lamp and lens access.

Perfect Fit™ installation process provides seamless integration in plaster, drywall and acoustical tiles, while maintaining optics in any ceiling thickness and allowing square trims to easily align with architecture and adjacent fixtures.

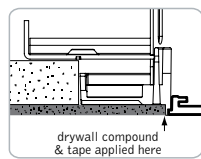
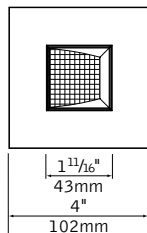
Smart Lock™ ring allows quick removal and re-assembly of trim components for field painting.

trim assembly

trim with adjustment mechanism

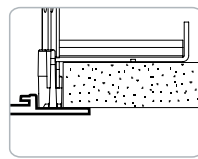
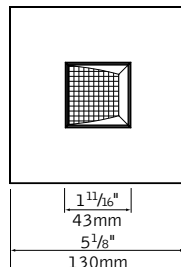


flush trim
(drywall only)



ceiling cutout dimensions:
6 3/16"

overlap trim

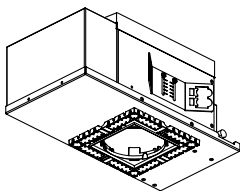


ceiling cutout dimensions:
4 11/16"

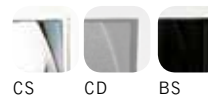
housing

T/IC

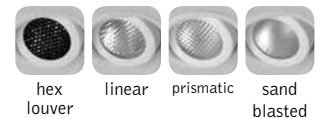
14" x 7.625" x 6"h



reflector options

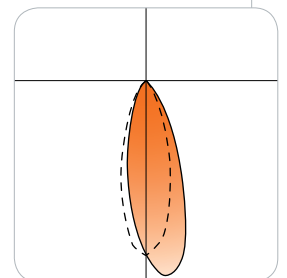


lens accessories



performance

Wall Wash Black Specular Reflector
CMH20MR16/830/FL25
1125 cd @ 0° (0° tilt)



Visit focalpointlights.com for complete photometric data.

fixture:

project:

housing specifications

lamp

Ceramic Metal Halide 20W MR16 Lamp provides a crisp white light source, 3000K and 80CRI, with UV stop. It is a protected lamp for use in open fixture designs.

construction

(IC) Thermally protected for Insulated Ceiling housing for new construction applications with direct insulation contact. Unit is enclosed in a 20ga black painted CRS housing, which eliminates stray light into the plenum, on a 20Ga CRS frame. IC housing ships standard with butterfly brackets which mount to ½ emt. or channel, vertically adjusts 2 inches. Bar hangers are an option and must be specified when ordering thermally protected housing. Transformer is accessible from below ceiling. Unit may be relamped from above. Fixture will not exceed 7.5 lbs.

electrical

Ceramic Socket GX10 for Metal Halide lamp, with permanently joined socket wires. Lamp is held by twist and lock 5KVA socket, ensuring simple lamp insertion and removal.

Large junction box 2x4x5.5" with ½" and ¾" pryouts. UL listed for thru branch wiring, 4#12 90°C conductors.

Thermally isolated electronic ballast, replaceable from below, is mounted outside of the housing to ensure cool operation. Wiring compartment mounting provides additional thermal break from the lamp. 120 or 277V, M156 ANSI spec ballast consumes 26 watt and provides >90% PF, 20% THD and end of life shut down circuitry.

installation

Adjustable throat allows infinite adjustment for ½" to 1½" thick ceilings. Shipped in ½" ceiling position. For thicker ceilings consult factory.

Ceiling thickness adjustment sleeve locks with supplied ¼" hex driver. Sleeve allows fine tuning of the housing for a perfect fit. Square housing allows 45° rotation to square up the edges of the trim with the architecture and adjacent trims. Comes with laser/string alignment guides.

Housing ships with dust cover.

trim specifications

aesthetics

Parabolic reflector cones ensure glare free optics. Reflector is .040" spun aluminum. All reflectors are painted finishes.

Specular kicker reflector and patterned glass provides smooth illumination down the wall.

Smart Lock™ ring allows disassembly of trim components for field painting of faceplate. Matte white finish may be used as a primer coat.

adjustment mechanism

Auto Memory for relamping, lamp returns to preset aiming position.

Mechanism is matte black finish and holds lamp and lenses independently. Hot aiming with Phillips screwdriver allows for 10° vertical tilt, and 363° rotation and locks into position. Mechanism pulls down for quick and easy relamping.

Vertical angle and horizontal rotation indicators display positioning.

Tempered soft focus lens and spacer plate supplied as standard.

Lens tray can hold up to two accessories, up to ¾" thick. Lenses remain undisturbed during relamping.

optics

50° cutoff to the lamp and the lamp image.

Specular kicker and patterned glass lens with diffuse finish.

construction

Trim stays captive to housing during relamping via torsion springs.

Torsion springs pull trim tight to the ceiling and install in 90° increments.

No visible fasteners within the trim.

Mechanical light traps eliminate light leaks.

Warp free die-cast aluminum faceplate, .040" thick flange on overlap versions.

Wall Wash optics rotate for alignment to walls and lock in position.

labels

UL listed, Wet label standard

No visible labels when trim is installed.

housing ordering

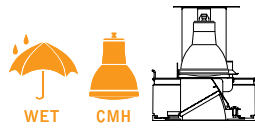
housing series		<u>FM4</u>
Metal Halide Housing	FM4	
lamp		<u>MR</u>
20W CMH MR16	MR	
ballast type		<u>M156U</u>
M156 20W Electronic (120V and 277V)	M156U	
faceplate type		_____
Square Flush	SF	
Square Overlap	SO	
housing type		_____
Combined T and IC Rated, up to 1½" ceilings	IC	
Combined T and IC Rated, 1½" to 2½" ceilings	IC2	
Combined T and IC Rated, 2½" to 3½" ceilings	IC3	
factory options		_____
Bar Hangers	BH	
Chicago Plenum	CP	
3000K Lamp 12" Spot	LSP	
3000K Lamp 25" Spot	LFL	
3000K Lamp 40" Wide Flood	LWF	

trim ordering

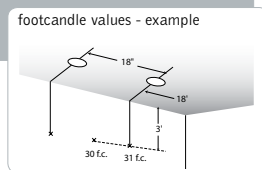
trim aperture		<u>D2</u>
1½" Aperture	D2	
faceplate type		_____
Square Flush (drywall only)	SF	
Square Overlap	SO	
optic		<u>WW</u>
Wall Wash	WW	
color		_____
Clear Specular	CS	
Clear Diffuse	CD	
Black Specular	BS	
faceplate finish		_____
White	WH	
Black	BK	
Titanium Silver	TS	
Aluminum Raw	AL	
lens accessories		_____
(soft focus lens supplied as standard)		
Hex Louver	HL	
Linear Spread Lens	LSL	
Prismatic Spread Lens	PSL	
Sand Blasted Lens	SBL	
Clear Lens	CL	
UV Lens	UVL	

a complete unit consists of two line items, housing and trim
example: FM4-MR-M156U-SF-IC
D2SF-WW-CD-WH

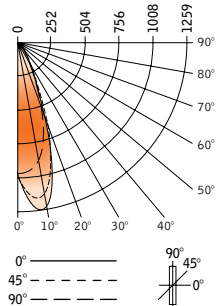
sqr wall wash
id®



Luminaire: 20W CMH wall wash, flood distribution with microprismatic lens
 Filename: D2SXWWCSMH20FL25_0.ies
 Catalog #: D2-SX-WW-CS-WH
 Efficiency: 53%
 Photometric Report #: 13644.0



CANDLEPOWER DISTRIBUTION



Vertical Angle	0°	22.5°	45°	67.5°	90°	Zonal Lumens
0°	1004	1004	1004	1004	1004	
5°	1247	1222	1171	1069	974	94
15°	998	995	953	880	733	201
25°	361	352	389	407	338	136
35°	110	100	108	113	110	53
45°	54	40	33	40	36	24
55°	30	25	17	20	14	14
65°	17	14	11	9	5	8
75°	5	5	7	1	0	2
85°	0	0	0	0	0	0
90°	0	0	0	0	0	0

FOOTCANDLE VALUES - units 24" from the wall

distance from ceiling	18°	24°	30°	36°
1'	4 4 4	3 3 3	3 2 3	3 2 3
2'	7 7 7	6 5 6	5 4 5	5 3 5
3'	10 9 10	8 7 8	6 6 6	6 4 6
4'	14 15 14	11 11 11	9 8 9	8 7 8
5'	18 18 18	14 14 14	11 11 11	10 9 10
6'	17 18 17	14 14 14	11 11 11	10 10 10
7'	15 16 15	13 13 13	10 10 10	9 9 9
8'	13 13 13	11 11 11	9 9 9	8 8 8
9'	10 11 10	9 9 9	7 8 7	6 7 6
10'	8 8 8	7 7 7	6 6 6	5 5 5

FOOTCANDLE VALUES - units 18" from the wall

distance from ceiling	18°	24°	30°	36°
1'	7 6 7	6 4 6	5 3 5	5 2 5
2'	12 12 12	10 8 10	10 5 10	9 3 9
3'	19 19 19	15 14 15	14 10 14	13 6 13
4'	25 26 25	19 19 19	16 15 16	15 11 15
5'	23 24 23	18 18 18	15 14 15	13 11 13
6'	19 19 19	15 15 15	13 12 13	11 10 11
7'	15 15 15	12 12 12	10 10 10	8 8 8
8'	11 11 11	9 10 9	8 8 8	7 7 7
9'	9 9 9	7 8 7	6 6 6	5 5 5
10'	7 7 7	6 6 6	5 5 5	4 4 4

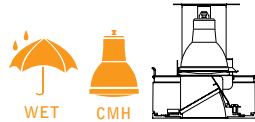
FOOTCANDLE VALUES - units 30" from the wall

distance from ceiling	18°	24°	30°	36°
1'	3 3 3	2 2 2	2 2 2	2 1 2
2'	4 4 4	3 3 3	3 3 3	3 2 3
3'	6 6 6	5 5 5	4 4 4	4 3 4
4'	8 8 8	6 6 6	5 5 5	5 4 5
5'	10 11 10	9 9 9	7 7 7	6 6 6
6'	13 14 13	10 11 10	8 9 8	7 7 7
7'	13 14 13	11 11 11	9 9 9	8 8 8
8'	12 13 12	10 10 10	9 9 9	7 7 7
9'	11 11 11	9 9 9	8 8 8	7 7 7
10'	9 9 9	8 8 8	7 7 7	6 6 6

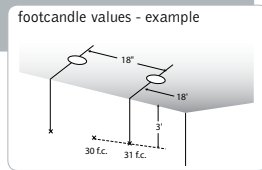
Footcandle results based on AGI32; off the shelf lamp in fixture, with microprismatic lens; Reflectances=0/0/0; LLF=1

Go to www.focalpointlights.com for additional photometric data.

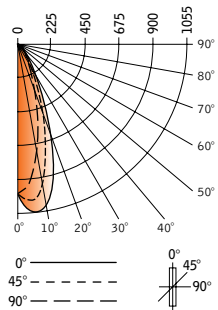
sqr wall wash
id®



Luminaire: 20W CMH wall wash, flood distribution with microprismatic lens
 Filename: D2SXWWBSMH20FL25_0.ies
 Catalog #: D2-SX-WW-BS-WH
 Efficiency: 45%
 Photometric Report #: 13574.0



CANDLEPOWER DISTRIBUTION



Vertical Angle	0°	22.5°	45°	67.5°	90°	Zonal Lumens
0°	1002	1002	1002	1002	1002	
5°	1125	1098	1046	986	927	89
15°	897	840	747	616	528	161
25°	398	368	312	252	210	107
35°	144	135	113	94	78	53
45°	62	54	39	35	31	24
55°	26	21	16	15	12	10
65°	11	9	7	5	1	4
75°	3	4	3	1	0	1
85°	0	0	0	0	0	0
90°	0	0	0	0	0	0

FOOTCANDLE VALUES - units 24" from the wall

distance from ceiling	18°	24°	30°	36°
1'	3 3 3	3 2 3	3 2 3	2 1 2
2'	9 9 9	7 6 7	6 4 6	6 3 6
3'	13 12 13	10 10 10	9 7 9	8 5 8
4'	15 15 15	12 11 12	10 9 10	9 7 9
5'	14 15 14	12 11 12	10 9 10	9 7 9
6'	13 13 13	10 10 10	9 8 9	8 7 8
7'	11 11 11	9 9 9	7 7 7	6 6 6
8'	9 9 9	7 7 7	6 6 6	5 5 5
9'	7 7 7	6 6 6	5 5 5	4 4 4
10'	6 6 6	5 5 5	4 4 4	4 4 4

FOOTCANDLE VALUES - units 18" from the wall

distance from ceiling	18°	24°	30°	36°
1'	8 6 8	7 4 7	6 3 6	6 2 6
2'	16 15 16	14 10 14	13 6 13	12 4 12
3'	21 20 21	17 14 17	16 10 16	15 7 15
4'	20 20 20	16 14 16	14 11 14	13 8 13
5'	17 16 17	13 12 13	11 10 11	10 8 10
6'	13 13 13	10 10 10	9 8 9	8 7 8
7'	10 10 10	8 8 8	7 7 7	6 6 6
8'	8 8 8	6 6 6	5 5 5	5 5 5
9'	6 6 6	5 5 5	4 4 4	4 4 4
10'	5 5 5	4 4 4	3 3 3	3 3 3

FOOTCANDLE VALUES - units 30" from the wall

distance from ceiling	18°	24°	30°	36°
1'	2 2 2	2 1 2	1 1 1	1 1 1
2'	5 5 5	4 4 4	4 3 4	3 2 3
3'	8 8 8	6 6 6	5 5 5	5 4 5
4'	10 10 10	8 8 8	7 6 7	6 5 6
5'	11 11 11	9 9 9	8 7 8	7 6 7
6'	11 11 11	9 9 9	8 7 8	7 6 7
7'	10 10 10	8 8 8	7 7 7	6 6 6
8'	9 9 9	7 7 7	6 6 6	5 5 5
9'	7 8 7	6 6 6	5 5 5	5 5 5
10'	6 6 6	5 6 5	5 5 5	4 4 4

Footcandle results based on AGI32; off the shelf lamp in fixture, with microprismatic lens; Reflectances=0/0/0; LLF=1

Go to www.focalpointlights.com for additional photometric data.