

recessed patient bed light system

apollo 8



features

8" wide recessed patient bed light with exam function available in 2', 3' & 4' lengths.

Available as a matching Patient Bed Pair, Apollo 8 combines both ambient and patient exam lighting in a clean architectural design.

T5 or T8 lamps provide reading and ambient illumination, additional T5HO lamps provide an average 80 footcandles for exam.

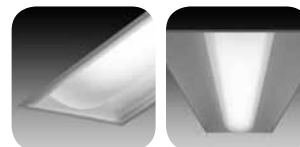
Separate circuiting provides individual control of ambient and exam function.

Sealed optical compartment for easy cleaning and maintenance.

Radial extruded acrylic diffuser with internal ribs provides low brightness, even illumination and ease of cleaning.

Symmetrical distribution enables flexibility in mounting location to accommodate a variety of patient room and equipment arrangements.

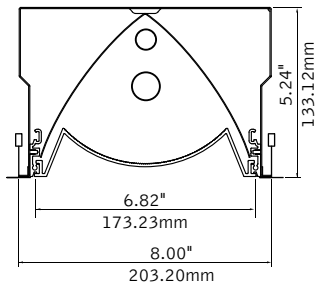
companion luminaires



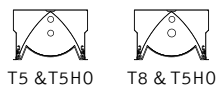
apollo 8 ambient only

apollo 1 & 2

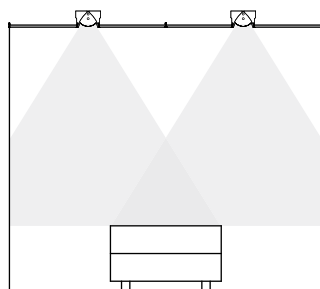
dimensional data



lamping

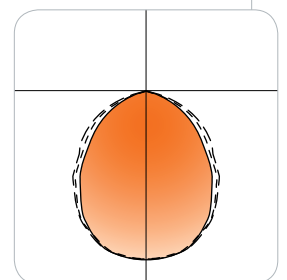


patient bed pair example



performance

2-Lamp T5/T5HO (Exam On)
70% Efficiency
2399 cd @ 0°



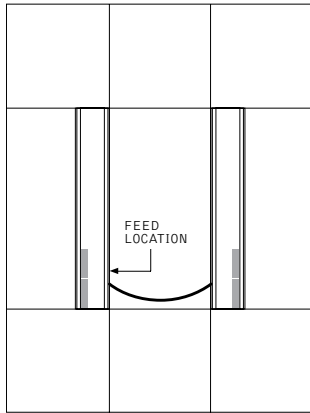
Visit focalpointlights.com for complete photometric data.

october 2011 C

fixture:

project:

system details



Select Patient Bed Pair option (PR) to receive a pair of luminaires with a connecting whip supplied.

specifications

construction

20 Ga. steel housing.
Lamp compartment is sealed and enclosed by detachable extruded acrylic diffuser.
Bottom access 20 Ga. steel ballast compartment.

weight: 32 lbs

optic

One-piece 20 Ga. steel side reflectors finished in Matte Satin White powder coat.
20 Ga. steel center reflector finished in High reflectance White.

electrical

Ballasts are thermally protected and have a Class "P" rating.
Low Voltage Controller is designed to function seamlessly alongside delicate hospital electronics. It emits no electromagnetic noise that either patient or equipment will detect. Any number of momentary contact switches can access two circuit loads. Both circuits can be switched in a sequence by using one switch or independently using separate switches. This is achieved by using jumpers conveniently located on the Low Voltage side of the housing.

load capacity: Dual (2) 120-277V Circuits at 4 Amps each load
 switch voltage: <9V (<900, micro amps)
 switch types: sequential (load 1,2, 1&2, off)
 individual (each load independently)

Consult factory for dimming specifications and availability.
UL and cUL listed.

finish

Polyester powder coat applied over a 5-stage pre-treatment.
Optional Anti-Microbial paint finish available.

ordering

luminaire series	FMA8D	FMA8D
Apollo 8 with exam function	FMA8D	
nominal size		
8"x2'	82	
8"x3'	83	
8"x4'	84	
shielding		RA
Radial Acrylic Lens	RA	
lamp quantity		11
1 Lamp Ambient/ 1 Lamp Exam	11	
lamp type		
T5 & T5H0	T5T5H0	
T8 & T5H0	T8T5H0	
circuits		2C
Dual Circuit	2C	
voltage		
120 Volt	120	
277 Volt	277	
ballast		
Electronic Program Start <10% THD	S	
Electronic Dimming Ballast*	D	
mounting		
Grid Mount	G	
Slot Tee	ST	
factory options		
Chicago Plenum	CP	
Drywall Frame Kit	DF	
Emergency Battery Pack*	EM	
Earthquake Clips	EQ	
Single Fuse and Holder	FU	
Flex Whip	FW	
Healthcare LV1202*	LVC	
Low Voltage Controller		
Include 3000K Lamp*	L830	
Include 3500K Lamp*	L835	
Include 4100K Lamp*	L841	
Patient Bed Pair (includes a pair of luminaires and a connecting whip. Pair is powered at a single feed location) (not recommended with dimming)	PR	
finish		
Matte Satin White	WH	
Matte Satin White Anti-Microbial	WHA	

* for more information see Reference section.