

surface mount  
softlite™ I



features

Surface mounted direct/indirect with Matte Satin White reflector and perforated lamp shield.

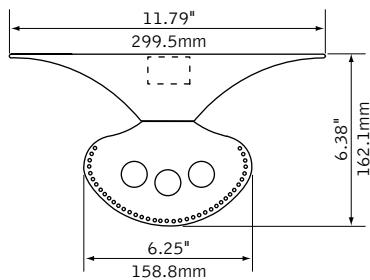
Two-piece sculpted end caps are removable to allow for continuous mounting of multiple luminaires.

Versatile design allows fixture to mount directly to drywall or to T-bar grid ceiling applications.

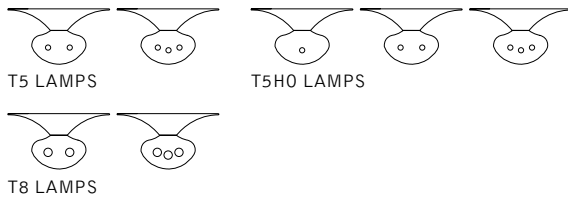
Lighting distribution provides illumination across the ceiling and walls.

Excellent choice for drywall ceiling or shallow plenum grid applications.

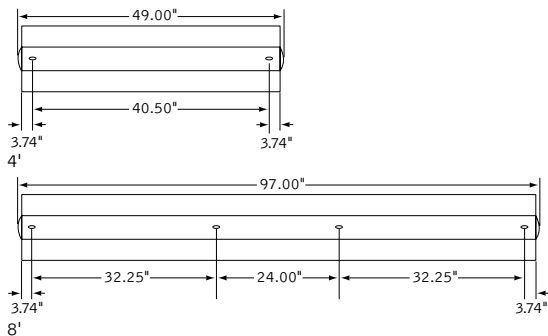
dimensional data



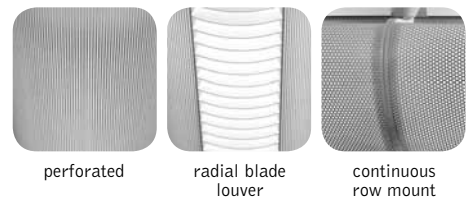
lamping options



fixture information



shielding options & details

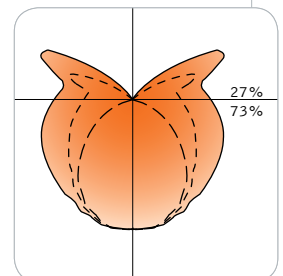


companion luminaire



performance

Perforated Lamp Shield  
2-Lamp T8  
79% Efficiency  
890 cd @ 5°

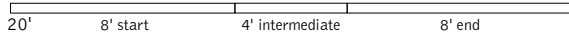
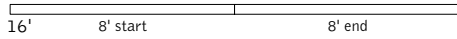
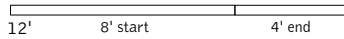


Visit [focalpointlights.com](http://focalpointlights.com) for complete photometric data.

fixture:

project:

### mounting information



Consult factory for additional row length information.

### specifications

#### construction

One-piece 20 Ga. steel housing.  
 Die-cast aluminum end caps complete shield assembly.  
 For row installation, internal brackets form hairline joint.

4' unit weight: 19 lbs.  
 8' unit weight: 38 lbs.

#### optic

One-piece 20 Ga. steel reflectors finished in Matte Satin White powder coat.  
 22 Ga. steel perforated lamp shield with white acrylic insert.  
 Optional radial blade louver, .75"H x 1" frequency blade spacing.

#### electrical

Luminaires are pre-wired for specified circuits.  
 Electronic ballasts are thermally protected and have a Class "P" rating.  
 Optional dimming ballasts available.  
 UL and cUL listed.

#### finish

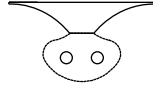
Polyester powder coat applied over a 5-stage pretreatment.

### ordering

<b>luminaire series</b>		<b>FS1S</b>
Softlite I	FS1S	
<b>shielding</b>		
Perforated Shield	PS	
Radial Blade Louver	RLP	
<b>lamping</b>		
2 Lamp T5	2T5	
3 Lamp T5	3T5	
1 Lamp T5H0	1T5H0	
2 Lamp T5H0	2T5H0	
3 Lamp T5H0	3T5H0	
2 Lamp T8	2T8	
3 Lamp T8	3T8	
<b>circuit</b>		
Single Circuit	1C	
Dual Circuit	2C	
<b>voltage</b>		
120 Volt	120	
277 Volt	277	
347 Volt	347	
<b>ballast</b>		
Electronic Instant Start <20% THD (T8 only)	E	
Electronic Program Start <10% THD	S	
Electronic Dimming Ballast*	D	
<b>mounting</b>		
Surface Grid	SG	
Surface Drywall	SW	
<b>factory options</b>		
Emergency Circuit*	EC	
Emergency Battery Pack*	EM	
HLR/GLR Fuse	FU	
Include 3500K Lamp*	L830	
Include 3000K Lamp*	L835	
Include 4100K Lamp*	L841	
<b>finish</b>		<b>WH</b>
Matte Satin White	WH	
<b>luminaire length</b>		
4'	4	
8'	8'	
12' (8' + 4')	12'	
16' (8' + 8')	16'	
20' (8' + 4' + 8')	20'	
24' (8' + 8' + 8')	24'	

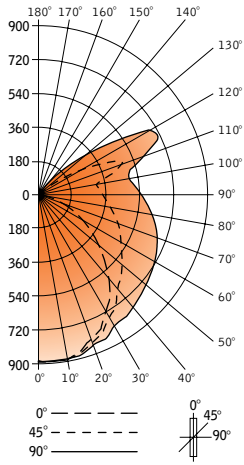
\* for more information see Reference section.

surface mount  
**softlite™ I**



Filename: FS1PS2T8.IES  
 Catalog #: FS1-14-B-2-T8-E-120-SM-PS-WH  
 Efficiency: 79%  
 Test #: 11996.0

**CANDLEPOWER DISTRIBUTION**



Spacing 1.2  
 Criterion: 1.5

Vertical Angle	Horizontal Angle				Zonal Lumens
	0°	22.5°	45°	67.5°	
0°	879	879	879	879	879
5°	888	887	888	890	890
15°	860	861	868	878	881
25°	785	788	811	834	846
35°	666	680	720	774	805
45°	505	531	617	718	762
55°	350	392	545	680	739
65°	196	281	479	638	700
75°	93	211	427	584	648
85°	22	167	360	515	577
90°	3	150	342	491	551
95°	13	135	319	461	517
105°	24	166	407	481	510
115°	21	39	381	662	712
125°	19	26	144	328	476
135°	0	15	30	144	187
145°	0	0	0	11	19
155°	0	0	0	0	0
165°	0	0	0	0	0
175°	0	0	0	0	0
180°	0	0	0	0	0

**LUMEN SUMMARY**

	Zone Lumens	% Lamp	% Fixt
0°-30°	707	12.0	15.3
0°-90°	3375	57.2	72.9
90°-130°	1198	20.3	25.9
90°-180°	1256	21.3	27.1
<b>Total Luminaire</b>	<b>4631</b>	<b>79</b>	<b>100.0</b>

**LUMINANCE DATA (CD/M<sup>2</sup>)**

Vertical Angle	0°	45°	90°
45°	1937	1547	1911
55°	1655	1467	1989
65°	1258	1439	2103
75°	975	1503	2281
85°	685	1588	2545

**CO-EFFICIENTS OF UTILIZATION**

Floor	80			70			20			
Ceiling	70	50	30	10	70	50	10	50	10	00
Wall	70	50	30	10	70	50	10	50	10	00
RCR 0	88	88	88	88	84	84	84	75	75	68
1										
2	79	74	70	66	74	70	63	63	58	56
3										
4	71	64	58	53	67	60	50	54	46	48
5										
6	64	56	49	43	60	53	42	47	38	42
7										
8	59	49	42	36	55	46	35	42	32	37
9										
10	53	43	36	30	50	41	29	37	27	33

Numbers indicate percentage values of

Go to [www.focalpointlights.com](http://www.focalpointlights.com) for additional photometric data.