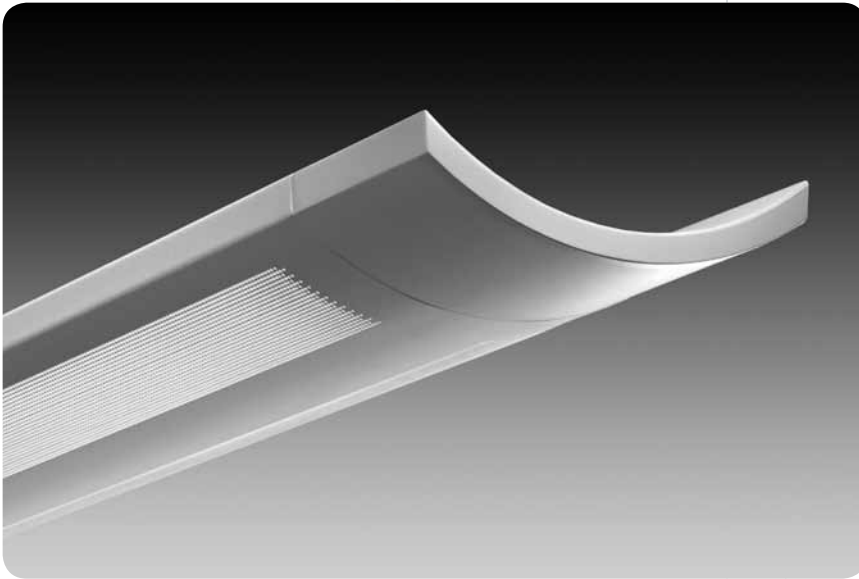


high performance
verve™ II xp



features

Suspended linear indirect fluorescent with contoured housing and end caps.

High performance optic for close to ceiling mounting.

One-piece steel housing with 5" die-cast end caps.

Housing available up to 12' lengths with two-point suspension.

Verve™ is an excellent choice for any open office application.

shielding options



perforated

slotted

solid

companion luminaire



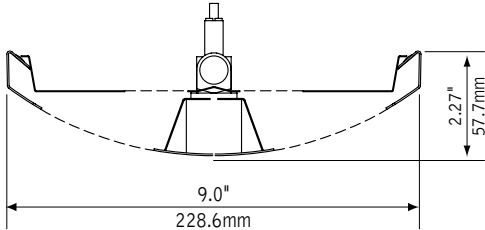
wall mount

sensor options

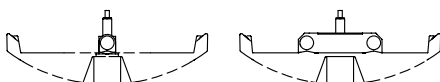


daylight /
 occupancy sensor

dimensional data



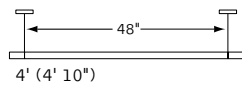
lamping



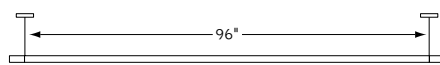
1 lamp T5/T5HO

2 lamp T5/T5HO

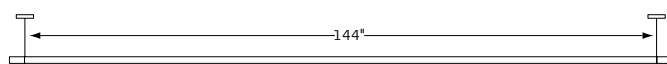
fixture information



4' (4' 10")



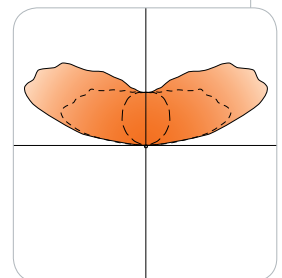
8' (8' 10")



12' (12' 10")

performance

Slotted Housing
 1-Lamp T5HO
 99% Efficiency
 1679 cd @ 115°

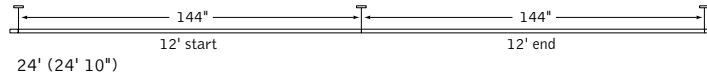
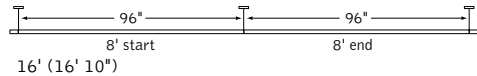


Visit focalpointlights.com for complete photometric data.

fixture:

project:

suspension information



Consult factory for additional row length information.

specifications

construction

One-piece 20 Ga. steel housing available solid or with perforated or slotted pattern. Perforated or slotted housing includes white acrylic insert. Die-cast 5" end cap fastened to housing. For row installation, internal brackets form hairline joint. Standard lengths are available in 4', 8' and 12'. All luminaires are provided with single point aircraft cable suspension mounted on 48", 96" or 144" centers.

- 4' unit weight: 20 lbs.
- 8' unit weight: 30 lbs.
- 12' unit weight: 46 lbs.

optic

Die-formed .020 semi-specular aluminum and 20 Ga. steel.

electrical

Luminaires are pre-wired with factory installed branch circuit wiring and over-molded quick connects. Factory installed SJT power cord at feed location is included. Electronic ballasts are thermally protected and have a Class "P" rating. Optional dimming ballasts available. UL and cUL listed.

sensors

Lutron daylight sensor is a directional sensor that operates with a Lutron EcoSystem (DB) or H-Series (DK) ballast and control system. The sensor has an integrated IR receiver for EcoSystem programming.

Philips Luxsense daylight sensor measures reflected light from the surface below and dims lamp output when the light level exceeds required level. Output may be adjusted by turning the dial. A 0-10V dimming ballast is required (T5 - DS, T5HO - D7 standard).

Wattstopper daylight sensor is a closed loop system that measures total light level from daylight and electric light. A 0-10V dimming ballast is required (T5 - DS, T5HO - D7 standard).

Wattstopper occupancy sensor is a passive infrared sensor designed for cubicles and small offices. It has built-in daylight sensing that will hold lights off when adequate ambient light exists. One sensor controls multiple fixtures.

finish

Polyester powder coat applied over a 5-stage pretreatment. Canopy finished in Matte Satin White.

ordering

| fixture series | FV2SXP |
|---|--------|
| Verve II | FV2SXP |
| shielding | _____ |
| Perforated Housing | PS |
| Slotted Housing | SL |
| Solid Housing | SD |
| lamping | _____ |
| 1 Lamp T5 | 1T5 |
| 2 Lamp T5 | 2T5 |
| 1 Lamp T5HO | 1T5HO |
| 2 Lamp T5HO | 2T5HO |
| circuit | _____ |
| Single Circuit | 1C |
| Dual Circuit | 2C |
| (Multiple lamp luminaires only) | |
| voltage | _____ |
| 120 Volt | 120 |
| 277 Volt | 277 |
| 347 Volt | 347 |
| ballast | _____ |
| Electronic Instant Start <20% THD (T8 Only) | E |
| Electronic Program Start <10% THD | S |
| Electronic Dimming Ballast* | D |
| mounting | _____ |
| 24" Cable Suspension | C24 |
| 48" Cable Suspension | C48 |
| 96" Cable Suspension | C96 |
| (Specify "J" in place of "C" for 5" dia. canopies at power feed and 2" dia. canopies at non-feed locations) (Consult factory for sloped ceiling applications) | |
| factory options | _____ |
| Dust Cover | DC |
| Emergency Circuit* | EC |
| Emergency Battery Pack* | EM |
| HLR/GLR Fuse | FU |
| Include 3000K Lamp* | L830 |
| Include 3500K Lamp* | L835 |
| Include 4100K Lamp* | L841 |
| Lutron™ Daylight Sensor* (EcoSystem/H-Series ballast & controls required) | LY1 |
| Lutron™ Sensor Feed* (EcoSystem ballast & controls required) | SF |
| Philips® Daylight Sensor* (0-10V dimming ballast required) | PY1 |
| WattStopper™ Daylight Sensor* (0-10V dimming ballast required) | WY1 |
| WattStopper™ Occupancy Sensor* | W01 |
| finish | _____ |
| Matte Satin White | WH |
| Titanium Silver | TS |
| luminaire length | _____ |
| 4' | 4' |
| 8' | 8' |
| 12' | 12' |
| 16' (8'+8') | 16' |
| 20' (12'+8') | 20' |
| 24' (12'+12') | 24' |
| integrator options | _____ |
| 90-degree Corner | FV2-90 |
| remotes | _____ |
| (specify quantity) | |
| WattStopper™ Daylight Setup Remote* (required for daylight programming, one included per order) | WYSR |
| WattStopper™ Occupant Controller* | WOR |

* for more information see Reference section.

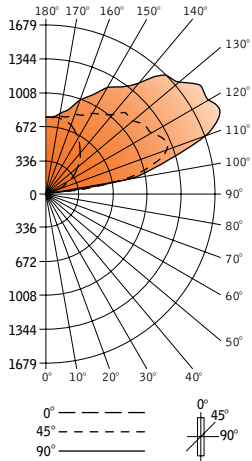
Focal Point LLC | 4141 S. Pulaski Rd, Chicago, IL 60632 | T: 773.247.9494 | F: 773.247.8484 | info@focalpointlights.com | www.focalpointlights.com. Focal Point LLC reserves the right to change specifications for product improvement without notification.

verve™ II



Filename: FV2SXPSL1T5H0.IES
 Catalog #: FV2SXP-SL-1T5H0-1C-120-S-C48-WH-4'
 Efficiency: 99%
 Test #: 72649.0

CANDLEPOWER DISTRIBUTION



Spacing 1.1
 Criterion: 1.2

| Vertical Angle | Horizontal Angle | | | | Zonal Lumens |
|----------------|------------------|-------|------|-------|--------------|
| | 0° | 22.5° | 45° | 67.5° | |
| 0° | 22 | 22 | 22 | 22 | 22 |
| 5° | 23 | 23 | 23 | 24 | 23 |
| 15° | 22 | 23 | 23 | 23 | 23 |
| 25° | 23 | 23 | 23 | 24 | 24 |
| 35° | 17 | 20 | 0 | 22 | 22 |
| 45° | 12 | 13 | 15 | 15 | 16 |
| 55° | 8 | 9 | 11 | 13 | 13 |
| 65° | 2 | 4 | 6 | 9 | 11 |
| 75° | 0 | 0 | 2 | 5 | 8 |
| 85° | 0 | 0 | 0 | 2 | 2 |
| 90° | 0 | 0 | 0 | 2 | 2 |
| 95° | 22 | 263 | 286 | 268 | 260 |
| 105° | 99 | 501 | 979 | 1109 | 1127 |
| 115° | 196 | 513 | 1116 | 1546 | 1679 |
| 125° | 307 | 546 | 1032 | 1467 | 1633 |
| 135° | 417 | 582 | 972 | 1306 | 1445 |
| 145° | 503 | 579 | 826 | 1035 | 1123 |
| 155° | 586 | 619 | 743 | 877 | 933 |
| 165° | 641 | 649 | 681 | 725 | 749 |
| 175° | 656 | 655 | 656 | 659 | 660 |
| 180° | 652 | 652 | 652 | 652 | 652 |

LUMEN SUMMARY

| Zone | Lumens | % Lamp | % Fixt |
|------------------------|-------------|-------------|------------|
| 90°-120° | 2129 | 42.6 | 43.1 |
| 90°-130° | 3029 | 60.6 | 61.3 |
| 90°-150° | 4274 | 85.5 | 86.5 |
| 90°-180° | 4879 | 97.6 | 98.7 |
| Total Luminaire | 4942 | 98.8 | 100 |

LUMINANCE DATA (CD/M²)

| Vertical Angle | 0° | 45° | 90° |
|----------------|----|-----|-----|
| 45° | 60 | 76 | 81 |
| 55° | 50 | 68 | 81 |
| 65° | 17 | 51 | 93 |
| 75° | 0 | 28 | 110 |
| 85° | 0 | 0 | 82 |

CO-EFFICIENTS OF UTILIZATION

| Floor | 80 | | | | 70 | | | | 50 | | | | 20 | | | |
|-------|----|----|----|----|----|----|----|----|----|----|----|----|----|----|----|----|
| | 70 | 50 | 30 | 10 | 70 | 50 | 30 | 10 | 50 | 30 | 10 | 00 | 50 | 30 | 10 | 00 |
| Wall | 94 | 94 | 94 | 94 | 81 | 81 | 81 | 81 | 56 | 56 | 32 | 32 | 11 | 11 | 11 | 1 |
| RCR 0 | 94 | 94 | 94 | 94 | 81 | 81 | 81 | 81 | 56 | 56 | 32 | 32 | 11 | 11 | 11 | 1 |
| 1 | 86 | 82 | 78 | 75 | 73 | 70 | 65 | 48 | 45 | 28 | 27 | 10 | 9 | 1 | 1 | |
| 2 | 78 | 71 | 66 | 61 | 67 | 61 | 53 | 42 | 37 | 25 | 22 | 9 | 8 | 1 | 1 | |
| 3 | 71 | 62 | 56 | 50 | 61 | 54 | 44 | 37 | 31 | 22 | 19 | 8 | 7 | 1 | 1 | |
| 4 | 65 | 55 | 48 | 42 | 55 | 47 | 37 | 33 | 16 | 17 | 16 | 7 | 6 | 1 | 1 | |
| 5 | 59 | 49 | 4 | 36 | 51 | 42 | 32 | 29 | 22 | 17 | 14 | 6 | 5 | 1 | 1 | |
| 6 | 55 | 44 | 36 | 31 | 47 | 38 | 27 | 26 | 19 | 15 | 12 | 5 | 4 | 1 | 1 | |
| 7 | 50 | 39 | 32 | 27 | 43 | 34 | 24 | 24 | 17 | 14 | 10 | 5 | 4 | 0 | 0 | |
| 8 | 47 | 36 | 29 | 24 | 40 | 31 | 21 | 21 | 15 | 13 | 9 | 4 | 3 | 0 | 0 | |
| 9 | 43 | 33 | 26 | 21 | 37 | 28 | 19 | 20 | 13 | 12 | 8 | 4 | 3 | 0 | 0 | |
| 10 | 41 | 30 | 23 | 19 | 35 | 26 | 17 | 18 | 1 | 11 | 7 | 4 | 3 | 0 | 0 | |

Numbers indicate percentage values of

Go to www.focalpointlights.com for additional photometric data.