

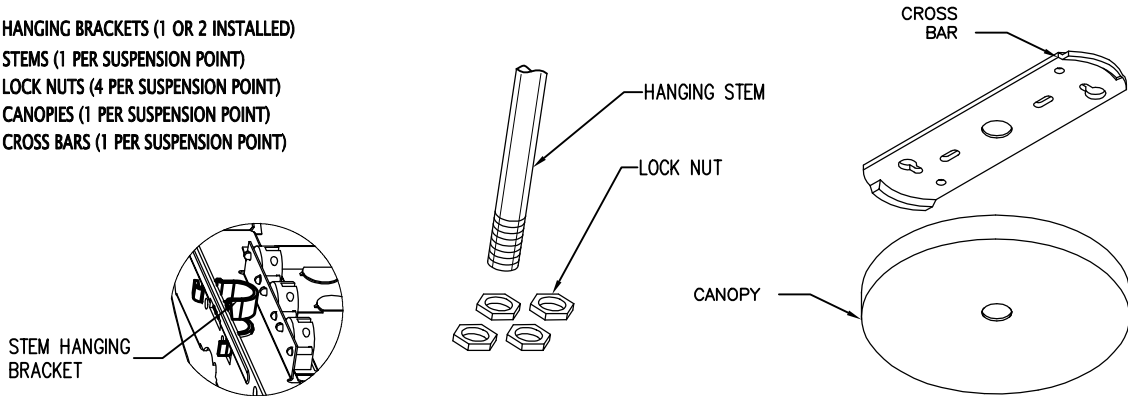
VERVE II STEM INSTALLATION

SAFETY AND INSTALLATION INSTRUCTIONS

FIXTURES MUST BE INSTALLED BY A QUALIFIED ELECTRICIAN (CHECK WITH LOCAL AND NATIONAL CODES FOR PROPER INSTALLATION). TO PREVENT ELECTRICAL SHOCK, DISCONNECT ELECTRICAL SUPPLY BEFORE INSTALLATION OR SERVICING.

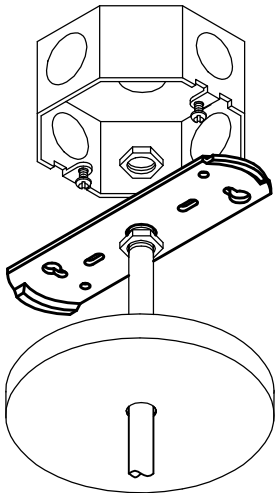
PARTS SUPPLIED BY FOCAL POINT:

- HANGING BRACKETS (1 OR 2 INSTALLED)
- STEMS (1 PER SUSPENSION POINT)
- LOCK NUTS (4 PER SUSPENSION POINT)
- CANOPIES (1 PER SUSPENSION POINT)
- CROSS BARS (1 PER SUSPENSION POINT)



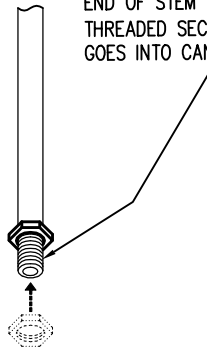
STEM INSTALLATION:

(1) ATTACH STEM AT CROSS BAR.

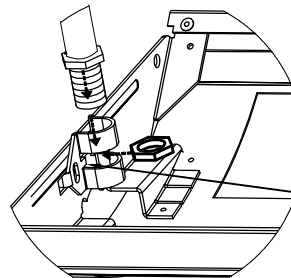


END OF STEM WITH LONGER THREADED SECTION (1.25") GOES INTO FIXTURE, END OF STEM WITH SHORTER THREADED SECTION (.75") GOES INTO CANOPY.

(2) THREAD ONE LOCK NUT ONTO BOTTOM OF STEM.

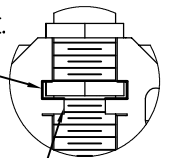


- (3) FOR NON-FEED LOCATIONS: POSITION SECOND LOCK NUT AT CENTER OF NOTCH IN HANGING BRACKET.
- (4) DROP STEM THROUGH HANGING BRACKET AND THREAD BOTTOM LOCK NUT ONTO STEM.

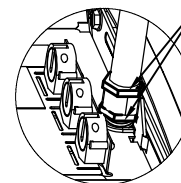
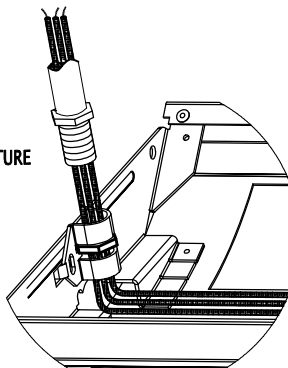


INSERT BOTTOM LOCK NUT HERE.

TABS PREVENT STEM FROM TILTING.



- (3) FOR FEED LOCATIONS: THREAD LEADS FROM FIXTURE THROUGH STEM AND UP TO JUNCTION BOX. BOTTOM LOCK NUT WILL BE FACTORY INSTALLED.
- (4) DROP STEM THROUGH HANGING BRACKET AND THREAD BOTTOM LOCK NUT ONTO STEM.



ADJUST BOTTOM LOCK NUT TO LEVEL FIXTURE. TIGHTEN TOP LOCK NUT TO SECURE STEM ASSEMBLY ONCE FIXTURE IS LEVEL.

CONTRACTOR IS RESPONSIBLE FOR ADEQUATELY REINFORCING WALLS AND/OR CEILINGS TO SUPPORT FIXTURE WEIGHT. FOCAL POINT, L.L.C. ACCEPTS NO RESPONSIBILITY FOR INADEQUATELY REINFORCED WALLS AND/OR CEILINGS.
 THE INFORMATION CONTAINED IN THIS DRAWING IS THE SOLE PROPERTY OF FOCAL POINT LLC. ANY REPRODUCTION IN PART OR WHOLE WITHOUT THE WRITTEN PERMISSION OF FOCAL POINT LLC IS PROHIBITED.
2002 © FOCAL POINT LLC



FOCAL POINT

INSTALLATION GUIDE NO.

ISO 190

DWG. NO.

REV. B